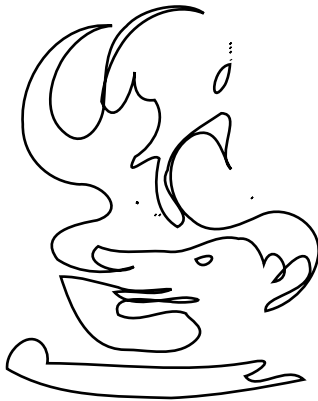


Sample Requirements Specification

jCoderz.org



Dino Coppola

BUILD_810 at 2010-03-11 15:41 +0000

Sample Requirements Specification

by Dino Coppola

BUILD_810 at 2010-03-11 15:41 +0000

Table of Contents

| | |
|--|----|
| 1. Introduction | 1 |
| 2. Use Cases | 2 |
| 2.1. Summary Level | 2 |
| 2.1.1. Micro Aggregation | 2 |
| 2.1.2. Micro Aggregation Administration | 6 |
| 2.1.3. Micro Aggregation Merchant Self Administration | 8 |
| 2.1.4. Micro Aggregation System Administration | 10 |
| 2.2. User Goal Level | 12 |
| 2.2.1. Micro Aggregation Merchant Self Administration | 12 |
| 2.2.2. m-Wallet | 37 |
| 3. Functional Requirement | 42 |
| 3.1. Organizational Structure | 42 |
| 3.1.1. Global Requirement. [DUMMY] [F-11] | 42 |
| 4. Domain Model | 43 |
| 4.1. Complete Domain Model - Detailed | 43 |
| 4.2. Axle [D-90005] | 43 |
| 4.3. Brand [D-90006] | 44 |
| 4.4. Organizational Structure | 45 |
| 4.4.1. Product [D-90013] | 45 |
| 4.5. group 1 | 46 |
| 4.5.1. Extent [D-90012] | 46 |
| 4.6. Vehicle Structure | 47 |
| 4.6.1. Vehicle [D-90007] | 47 |
| 4.6.2. Grumpf | 49 |
| 4.7. Disassembly | 50 |
| 4.7.1. Extended Feature presentation [D-10035] | 50 |
| 4.7.2. Feature presentation [D-10034] | 51 |
| 4.8. Project Structure | 52 |
| 4.8.1. Project [D-80000] | 52 |
| 4.9. Vehicle | 53 |
| 4.9.1. Model [D-90018] | 53 |
| 5. Terms | 55 |
| 5.1. Lampukistan [T-99001] | 55 |
| 5.2. Porada Ninfu [T-99000] | 55 |
| 6. Roles | 56 |
| 6.1. Complete Role Dependencies | 56 |
| 6.2. Main Group | 56 |
| 6.2.1. Consumer [RP-90001] | 56 |
| 6.2.2. Responsible [RP-90000] | 57 |
| A. All Actors | 58 |
| A.1. Primary Actors | 58 |
| A.2. Secondary Actors | 58 |
| B. Mapping Use Cases to Roles | 60 |
| B.1. Summary Level - Micro Aggregation | 60 |
| B.2. Summary Level - Micro Aggregation System Administration | 60 |
| B.3. Summary Level - Micro Aggregation Merchant Self Administra- tion | 60 |
| B.4. Summary Level - Micro Aggregation Administration | 60 |
| B.5. User Goal Level - m-Wallet | 60 |
| B.6. User Goal Level - Micro Aggregation Merchant Self Administra- tion | 60 |
| C. Use Case Revision | 62 |
| D. Open Issues | 64 |
| D.1. Issues for Use Cases | 64 |
| D.1.1. [UC-5 Consumer Self Service] : | 64 |

| | |
|--|----|
| D.1.2. [UC-10 Consumer Registration] : | 64 |
| D.1.3. [UC-19 Trigger Payment] : | 64 |
| D.1.4. [UC-14 Modify Master Data] : | 64 |
| D.1.5. [UC-27 Modify Aggregation Rules Parameters] : | 64 |
| D.2. Issues for Requirements | 64 |
| E. Priorities | 65 |
| Glossary | 66 |
| Index | 67 |

List of Figures

| | |
|---|----|
| 2.1. Dependency diagram for use case UC-1 | 2 |
| 2.2. Use case diagram for use case UC-1 | 3 |
| 2.3. Dependency diagram for use case UC-4 | 4 |
| 2.4. Use case diagram for use case UC-4 | 5 |
| 2.5. Dependency diagram for use case UC-5 | 6 |
| 2.6. Use case diagram for use case UC-5 | 7 |
| 2.7. Dependency diagram for use case UC-3 | 8 |
| 2.8. Use case diagram for use case UC-3 | 9 |
| 2.9. Dependency diagram for use case UC-2 | 10 |
| 2.10. Use case diagram for use case UC-2 | 11 |
| 2.11. Dependency diagram for use case UC-14 | 13 |
| 2.12. Use case diagram for use case UC-14 | 13 |
| 2.13. Dependency diagram for use case UC-16 | 15 |
| 2.14. Use case diagram for use case UC-16 | 16 |
| 2.15. Dependency diagram for use case UC-19 | 18 |
| 2.16. Use case diagram for use case UC-19 | 19 |
| 2.17. Dependency diagram for use case UC-22 | 22 |
| 2.18. Use case diagram for use case UC-22 | 23 |
| 2.19. Dependency diagram for use case UC-23 | 25 |
| 2.20. Use case diagram for use case UC-23 | 26 |
| 2.21. Dependency diagram for use case UC-25 | 29 |
| 2.22. Use case diagram for use case UC-25 | 29 |
| 2.23. Dependency diagram for use case UC-26 | 31 |
| 2.24. Use case diagram for use case UC-26 | 31 |
| 2.25. Dependency diagram for use case UC-27 | 34 |
| 2.26. Use case diagram for use case UC-27 | 35 |
| 2.27. Dependency diagram for use case UC-10 | 37 |
| 2.28. Use case diagram for use case UC-10 | 38 |
| 4.1. Complete Domain Model - Detailed | 43 |
| 4.2. Domain model diagram for entity D-90005 Axle | 44 |
| 4.3. Domain model diagram for entity D-90006 Brand | 45 |
| 4.4. Domain model for category Organizational Structure. | 45 |
| 4.5. Domain model for category group 1. | 46 |
| 4.6. Domain model diagram for entity D-90012 Extent | 47 |
| 4.7. Domain model for category Vehiclelelel Structure. | 47 |
| 4.8. Domain model diagram for entity D-90007 Vehicle | 48 |
| 4.9. Domain model for category Grumpf | 49 |
| 4.10. Domain model diagram for entity D-90021 Blub | 49 |
| 4.11. Domain model for category Disassembly. | 50 |
| 4.12. Domain model diagram for entity D-10035 Extended Feature presentation | 50 |
| 4.13. Domain model diagram for entity D-10034 Feature presentation | 51 |
| 4.14. Domain model for category Project Structure. | 52 |
| 4.15. Domain model diagram for entity D-80000 Project | 53 |
| 4.16. Domain model for category Vehicle. | 53 |
| 4.17. Domain model diagram for entity D-90018 Model | 54 |
| 6.1. Complete Role Dependencies | 56 |
| 6.2. Role model for category Main Group. | 56 |
| 6.3. Role diagram for role RP-90001 Consumer | 57 |
| 6.4. Role diagram for role RP-90000 Responsible | 57 |

Chapter 1. Introduction

The purpose of this document is to test xdoc

C A procedural programming language invented by K&R.

Pascal A procedural programming language invented by Niklaus Wirth.

Chapter 2. Use Cases

2.1. Summary Level

2.1.1. Micro Aggregation

[UC-1] summary

Priority

Unknown Priority: global view (vision)

Scope

Micro Aggregation

Overview

System to aggregate micro payments and to settle aggregated amounts.

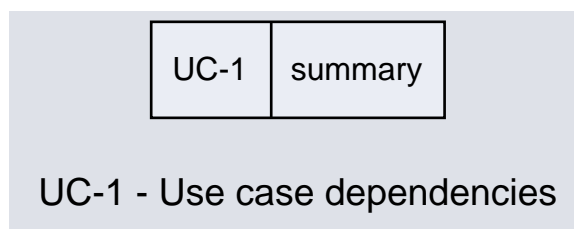


Figure 2.1. Dependency diagram for use case UC-1

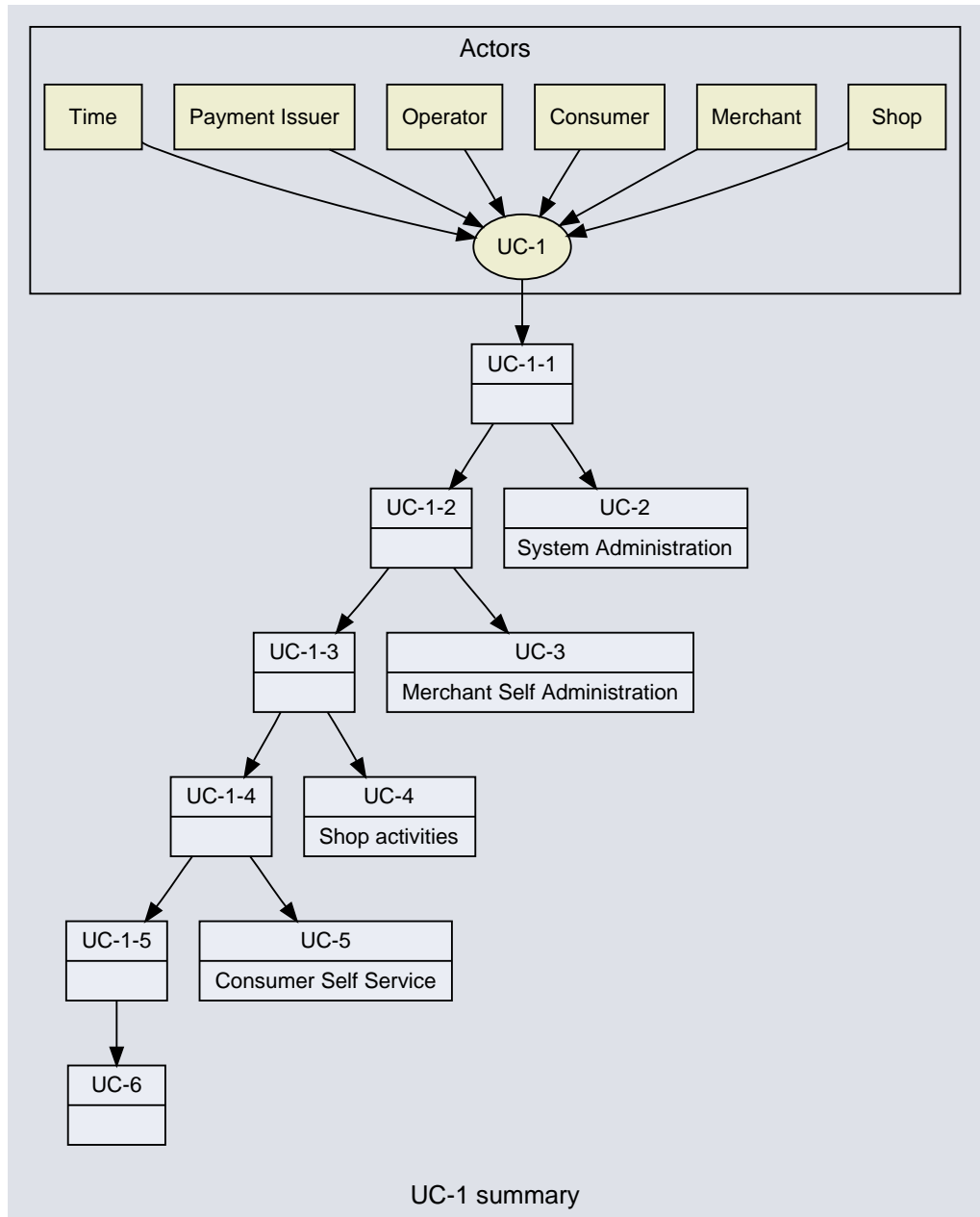


Figure 2.2. Use case diagram for use case UC-1

Actors

- Primary: No role for actor Shop
 - Channel: Web

- Secondary: No role for actor Merchant
 - Channel: WEB

- Secondary: [\[Section 6.2.1, “Consumer \[RP-90001\]”\]](#)
 - Channel: WEB

- Secondary: No role for actor Operator

- Channel: WEB
- Secondary: No role for actor Payment Issuer
 - Channel: WEB
- Secondary: No role for actor Time
 - Channel: WEB

Preconditions

- none

Stakeholder

- Service Provider wants to enable micro payments to payment instruments like credit cards and to participate by reducing cost of single transactions.
-

Success

1. UC-1-1: Operator is able to administrate the system. [[UC-2 System Administration](#)]
2. UC-1-2: Merchant is able to view/maintain it's account via self administration. [[UC-3 Merchant Self Administration](#)]
3. UC-1-3: Shop can handle payments. [[UC-4 Shop activities](#)]
4. UC-1-4: Consumer is able to manage it's data and disputes via self administration. [[UC-5 Consumer Self Service](#)]
5. UC-1-5: Payment Issuer is able to lock payment instruments. [???

Guarantees

- Success: none yet
- Minimal: none yet

[UC-4] Shop activities

Priority

Unknown Priority: summary

Scope

Micro Aggregation

Overview

Shop interacts with the micro aggregation system.

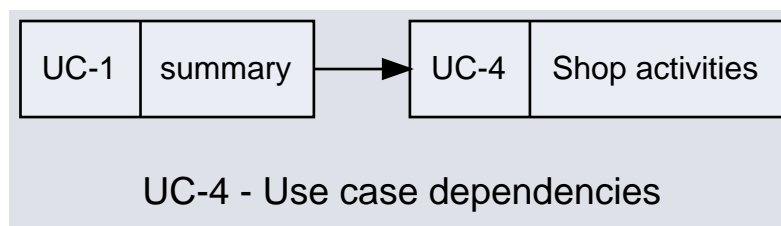


Figure 2.3. Dependency diagram for use case UC-4

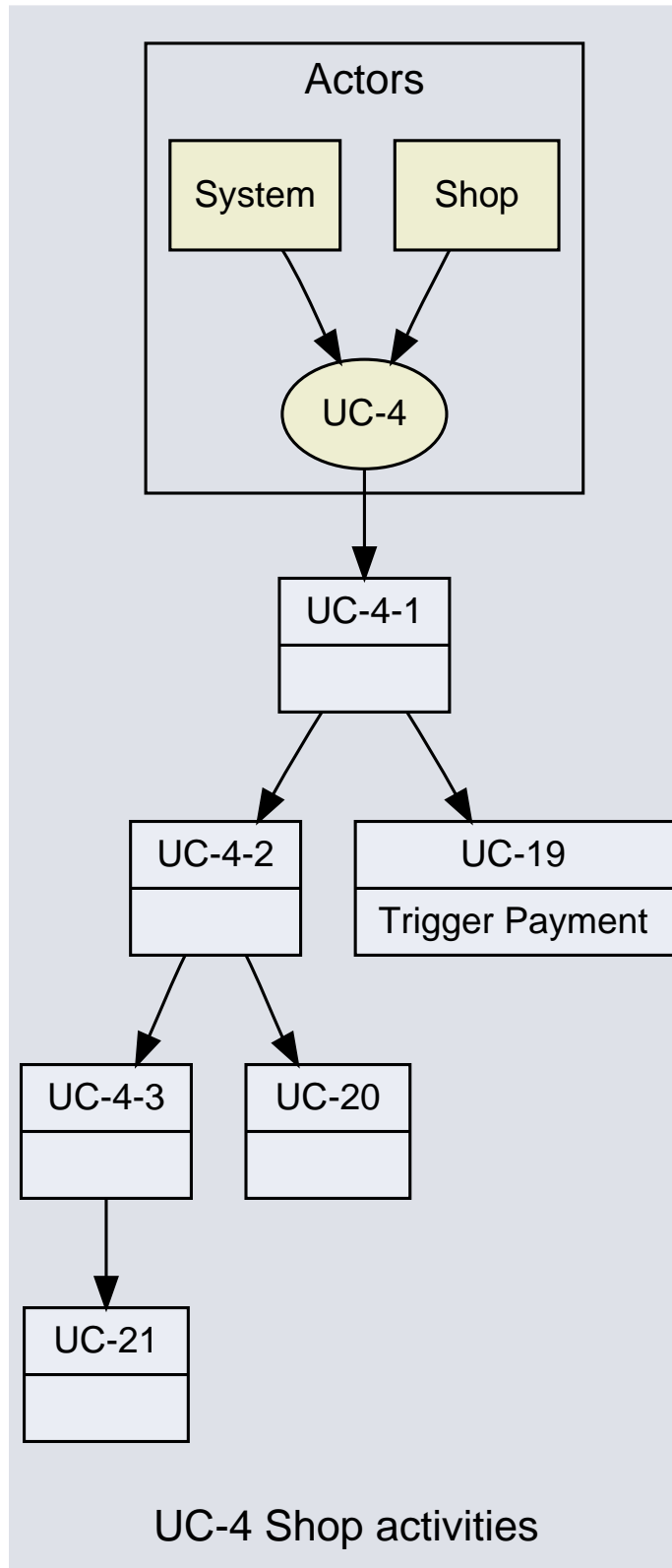


Figure 2.4. Use case diagram for use case UC-4

Actors

- Primary: No role for actor Shop

- Secondary: No role for actor System

Preconditions

- none

Referencing use cases:

- [[UC-1-3 summary](#)]

Stakeholder

- Shop wants to interact with the system.

Success

1. UC-4-1: Shop triggers payment. [[UC-19 Trigger Payment](#)]
2. UC-4-2: Shop queries for a payment. [??]
3. UC-4-3: Shop checks consumers payment instrument. [??]

Guarantees

- Success: none yet

2.1.2. Micro Aggregation Administration

[UC-5] Consumer Self Service

Priority

High

Scope

Micro Aggregation Administration

Overview

Consumer Self Administration to manage disputes and view transactions.

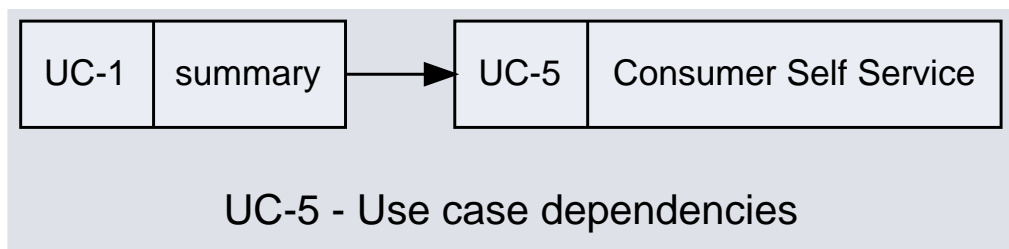


Figure 2.5. Dependency diagram for use case UC-5

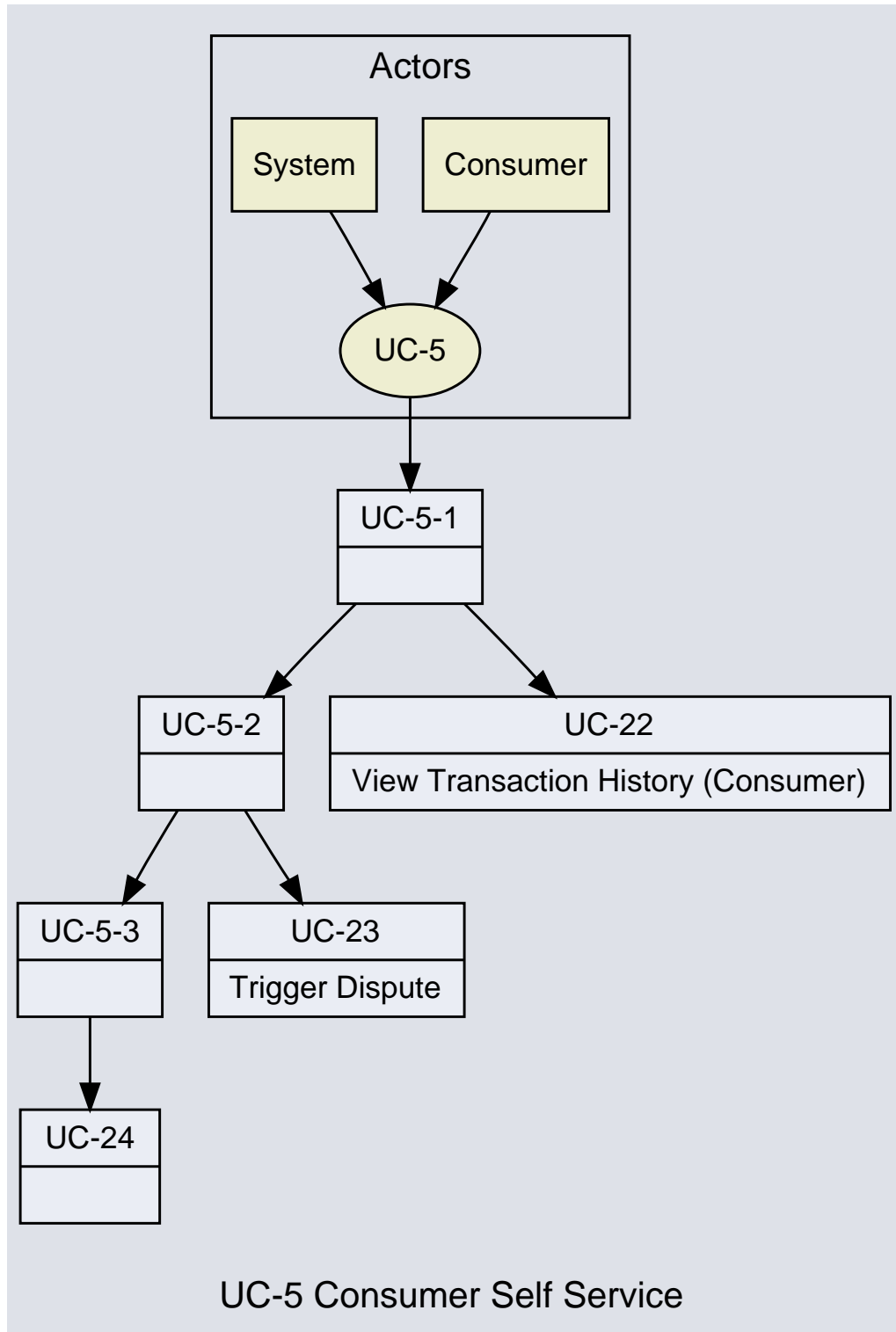


Figure 2.6. Use case diagram for use case UC-5

Actors

- Primary: [[Section 6.2.1, "Consumer \[RP-90001\]"](#)]
 - Channel: Web
- Secondary: No role for actor System

- Channel: WEB

Preconditions

- none

Referencing use cases:

- [\[UC-1-4 summary\]](#)

Stakeholder

- Consumer wants to get information about his TX and disputes, as well as about his payment instruments.
- Merchant wants to provide the consumer with information.

Success

1. UC-5-1: Consumer views transaction history. [[UC-22 View Transaction History \(Consumer\)](#)] [[Section 3.1.1, "Global Requirement. \[DUMMY\] \[F-11\]"](#)]
2. UC-5-2: Consumer triggers a dispute. [[UC-23 Trigger Dispute](#)]
3. UC-5-3: Consumer blocks a payment instrument. [??]

Guarantees

- Success: none yet
- Minimal: none yet

Open Issues

1. Should it be possible to have more than one Payment instrument available for the consumer?

2.1.3. Micro Aggregation Merchant Self Administration

[UC-3] Merchant Self Administration

Priority

High

Scope

Micro Aggregation Merchant Self Administration

Overview

Administration of the system.

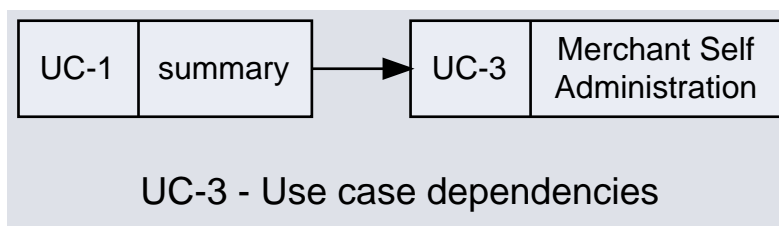


Figure 2.7. Dependency diagram for use case UC-3

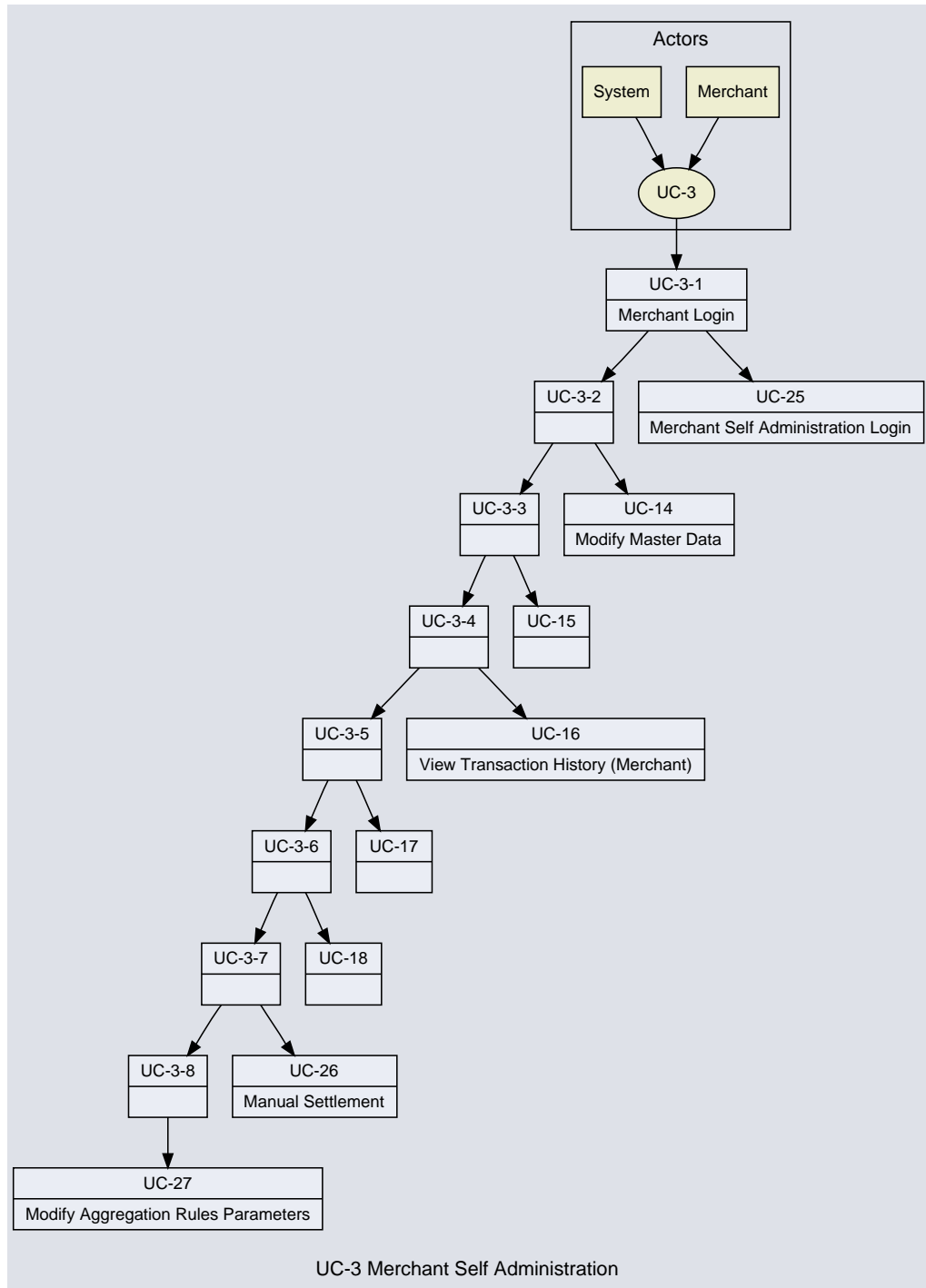


Figure 2.8. Use case diagram for use case UC-3

Actors

- Primary: No role for actor Merchant
 - Channel: Web

- Secondary: No role for actor System
 - Channel: WEB

Preconditions

- none

Referencing use cases:

- [[UC-1-2 summary](#)]

Stakeholder

- Merchant wants to get control over it's data, TX and disputes.
- Service Provider wants to transfer responsibilities to the merchant, but only as far as allowed.

Success

1. UC-3-1 [Merchant Login]: Merchant performs login. [[UC-25 Merchant Self Administration Login](#)]
2. UC-3-2: Merchant is able to manage his master data via self administration. [[UC-14 Modify Master Data](#)]
3. UC-3-3: Merchant can handle disputes related to him. [???
4. UC-3-4: Merchant can view and administer it's transactions. [[UC-16 View Transaction History \(Merchant\)](#)]
5. UC-3-5: Merchant can view statistics. [???
6. UC-3-6: Merchant can view it's invoices. [???
7. UC-3-7: Merchant can trigger the settlement manually. [[UC-26 Manual Settlement](#)]
8. UC-3-8: Merchant can modify aggregation rules parameters. [[UC-27 Modify Aggregation Rules Parameters](#)]

Guarantees

- Success: none yet
- Minimal: none yet

2.1.4. Micro Aggregation System Administration

[UC-2] System Administration

Priority

Unknown Priority: medium - productive

Scope

Micro Aggregation System Administration

Overview

Administration of the system.

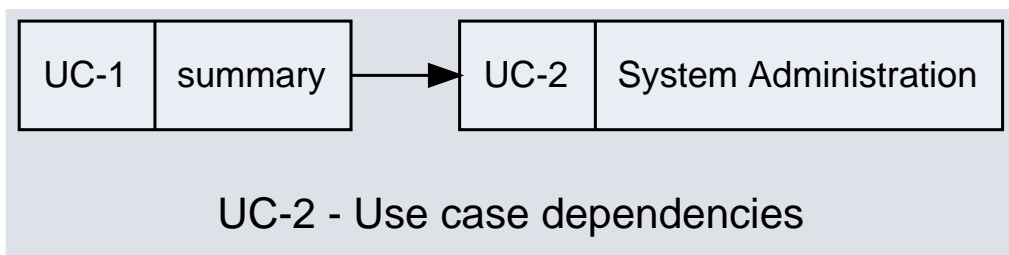


Figure 2.9. Dependency diagram for use case UC-2

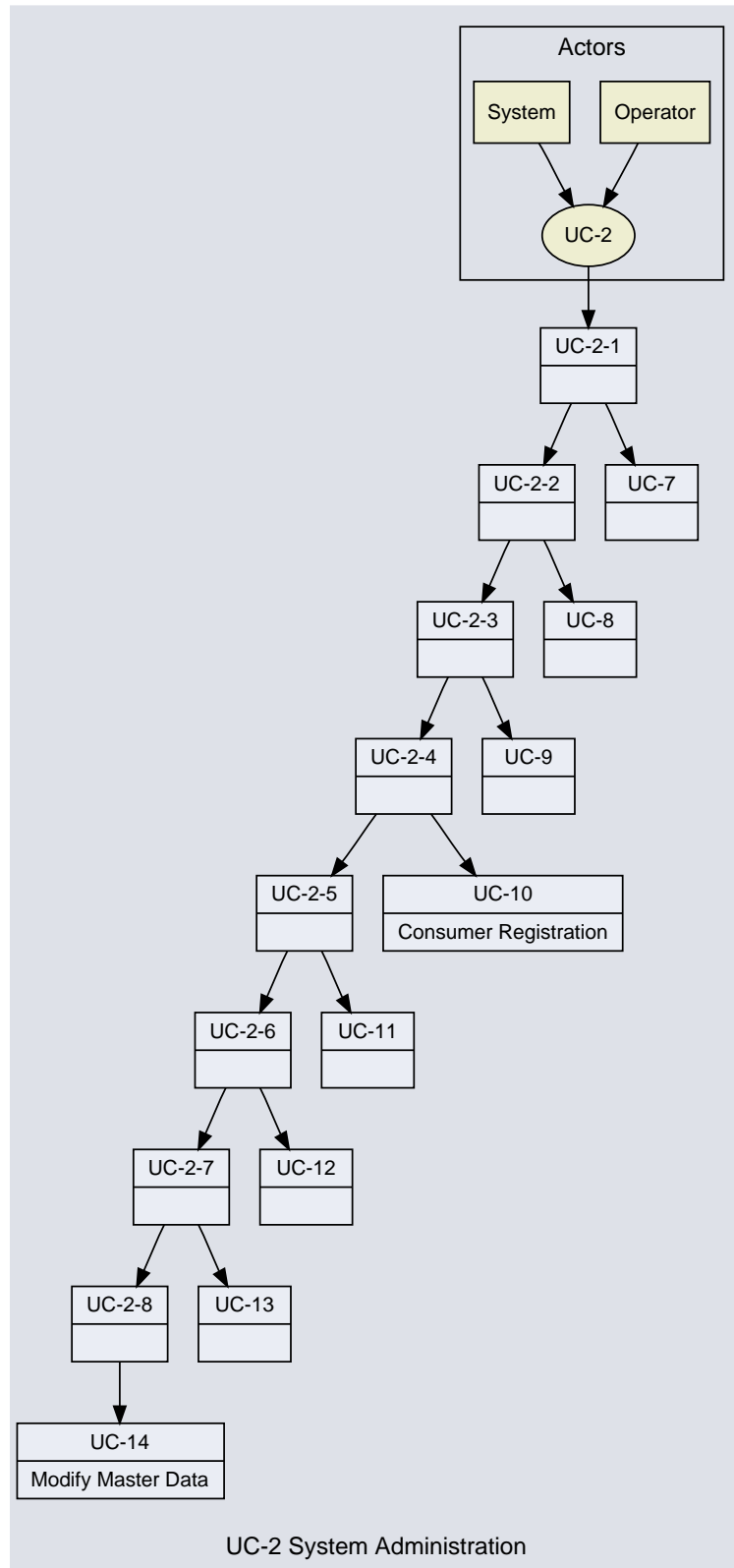


Figure 2.10. Use case diagram for use case UC-2

Actors

- Primary: No role for actor Operator

- Secondary: No role for actor System

Preconditions

- none

Referencing use cases:

- [[UC-1-1 summary](#)]

Stakeholder

- Operator wants to administer merchant relevant data and settings.
- Merchant wants to be configured with the correct settings.

Success

1. UC-2-1: Operator registers a new merchant. [???
2. UC-2-2: Operator views and filters the merchant list. [???
3. UC-2-3: Operator is able to modify merchants data. [???
4. UC-2-4: Operator is able to administrate fees. [[UC-10 Consumer Registration](#)]
5. UC-2-5: Operator is able to administrate payment gateways. [???
6. UC-2-6: Operator is able to monitor the system and to get reports from it. [???
7. UC-2-7: Operator is able to create and modify scoring rules. [???
8. UC-2-8: Operator is able to create and modify aggregation rules. [[UC-14 Modify Master Data](#)]

Guarantees

- Success: none yet

2.2. User Goal Level

2.2.1. Micro Aggregation Merchant Self Administration

2.2.1.1. [UC-14] Modify Master Data

Priority

Unknown Priority: high - prototype

Scope

Micro Aggregation Merchant Self Administration

Overview

Possibility to view all the transactions related to an account.

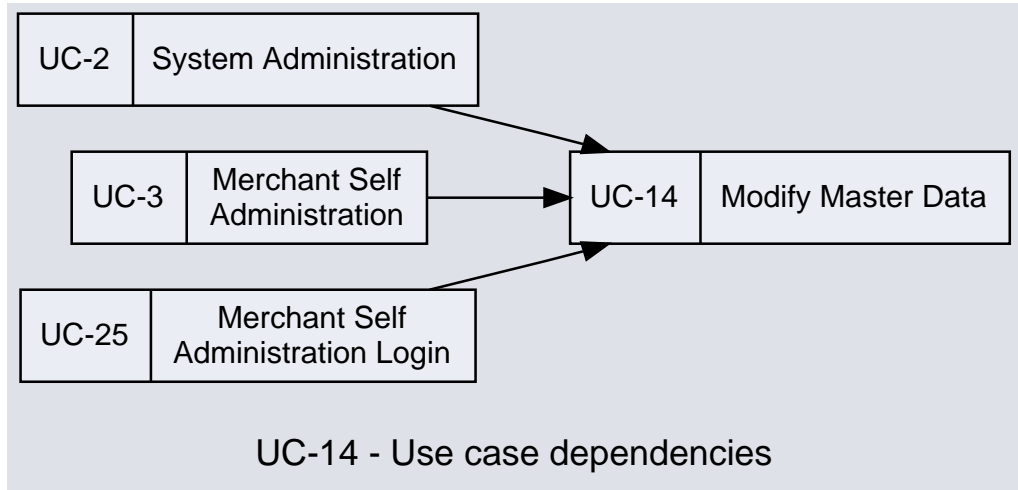


Figure 2.11. Dependency diagram for use case UC-14

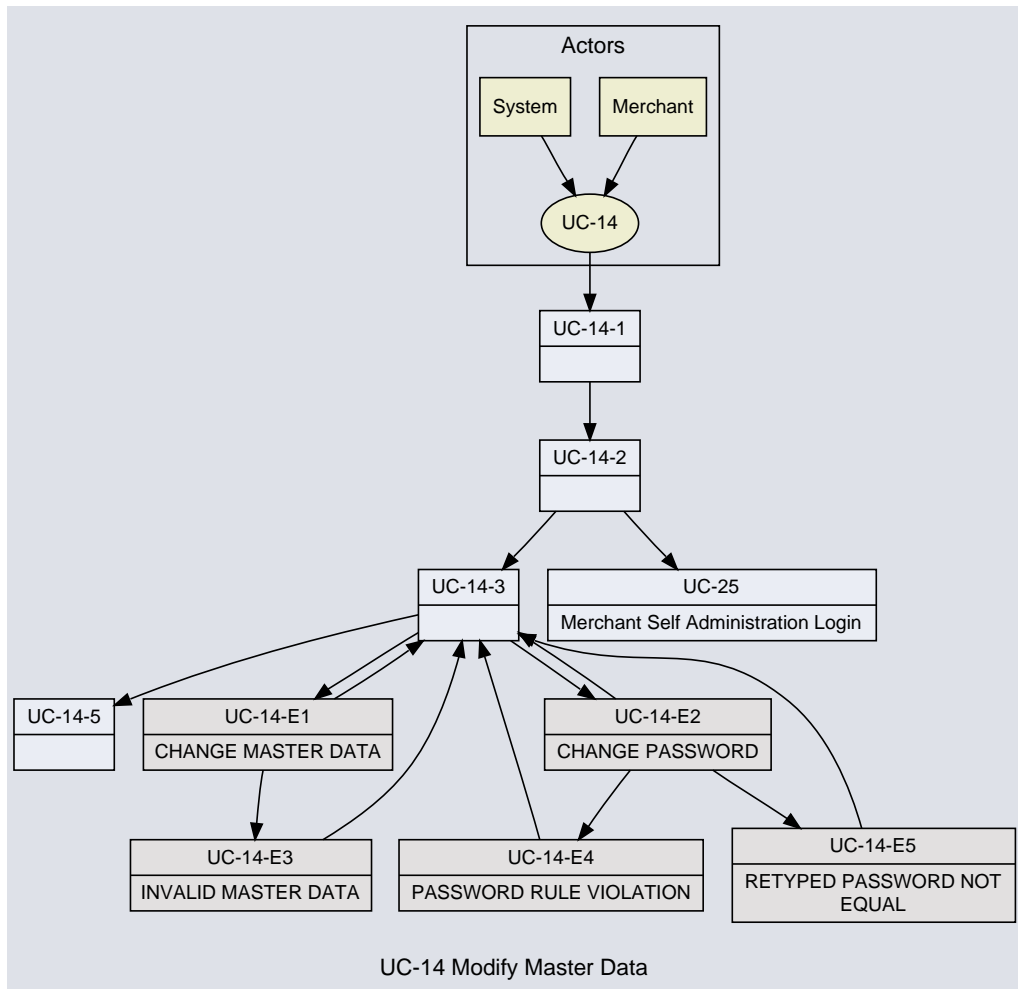


Figure 2.12. Use case diagram for use case UC-14

Response Times

immediately

Frequency Of Use

ad-hoc

Actors

- Primary: No role for actor Merchant
- Secondary: No role for actor System

Preconditions

- none

Referencing use cases:

- [\[UC-2-8 System Administration\]](#)
- [\[UC-3-2 Merchant Self Administration\]](#)
- [\[UC-25-3 Merchant Self Administration Login\]](#)
- [\[UC-25-4 Merchant Self Administration Login\]](#)
- [\[UC-25-E1-3 INVALID USERNAME Merchant Self Administration Login\]](#)
- [\[UC-25-E2-2 INVALID PASSWORD Merchant Self Administration Login\]](#)
- [\[UC-25-E2-4 INVALID PASSWORD Merchant Self Administration Login\]](#)

Stakeholder

- Merchant wants to view and modify it's master data set.
- Service Provider wants to enable the customer to maintain master data.

Success

1. UC-14-1: Merchant enters master data configuration view.
2. UC-14-2: System checks, if merchant is logged in. [\[UC-25 Merchant Self Administration Login\]](#)
3. UC-14-3: System displays the master data set:

```
<itemizedlist>  
<listitem>contact data</listitem>  
<listitem>link to submit the changed data </listitem>  
</itemizedlist>
```

[\[UC-14-E1 CHANGE MASTER DATA\]](#) and an additional block to change the password:

```
<itemizedlist>  
<listitem>new password</listitem>  
<listitem>new password retyped</listitem>  
<listitem>link to submit the changed password</listitem>  
</itemizedlist>
```

[\[UC-14-E2 CHANGE PASSWORD\]](#)
4. UC-14-5: use case ends.

Extensions

E1: CHANGE MASTER DATA

1. UC-14-E1-1: System checks, if the master data has been set correctly. [\[UC-14-E3 INVALID MASTER DATA\]](#)
2. UC-14-E1-2: System stores the new master data and returns to [\[UC-14-3 Modify Master Data\]](#) .

E2: CHANGE PASSWORD

1. UC-14-E2-1: System checks password against system rules. [UC-14-E4 PASSWORD RULE VIOLATION]
2. UC-14-E2-2: System compares new password and the retyped new password against each other. [UC-14-E5 RETYPED PASSWORD NOT EQUAL]
3. UC-14-E2-3: System stores new password.
4. UC-14-E2-4: System returns to [UC-14-3 Modify Master Data]

E3: INVALID MASTER DATA

1. UC-14-E3-1: System notifies merchant which parts of the master data were set wrongly and returns to [UC-14-3 Modify Master Data]

E4: PASSWORD RULE VIOLATION

1. UC-14-E4-1: System notifies merchant why the password could not be set and returns to [UC-14-3 Modify Master Data] .

E5: RETYPED PASSWORD NOT EQUAL

1. UC-14-E5-1: System notifies merchant why the password could not be set and returns to [UC-14-3 Modify Master Data] .

Guarantees

- Success: Merchant could view and modify successfully the master data and has been notified about the changes.

Open Issues

1. What are other master data?

2.2.1.2. [UC-16] View Transaction History (Merchant)

Priority

Unknown Priority: high - prototype

Scope

Micro Aggregation Merchant Self Administration

Overview

Possibility to view all the transactions related to a merchant.

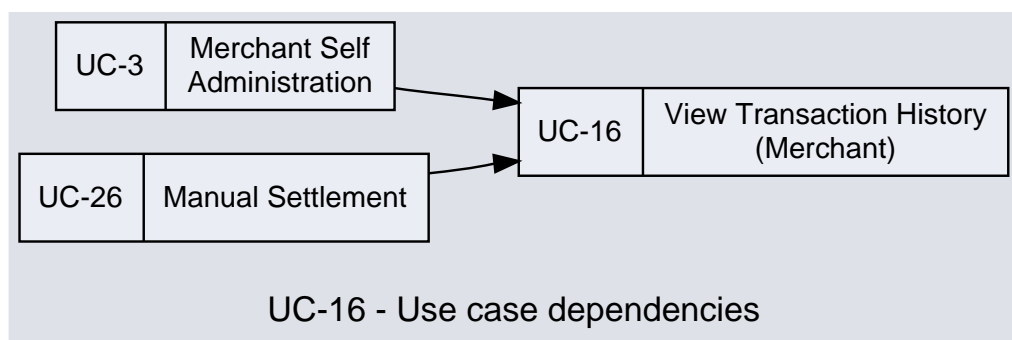


Figure 2.13. Dependency diagram for use case UC-16

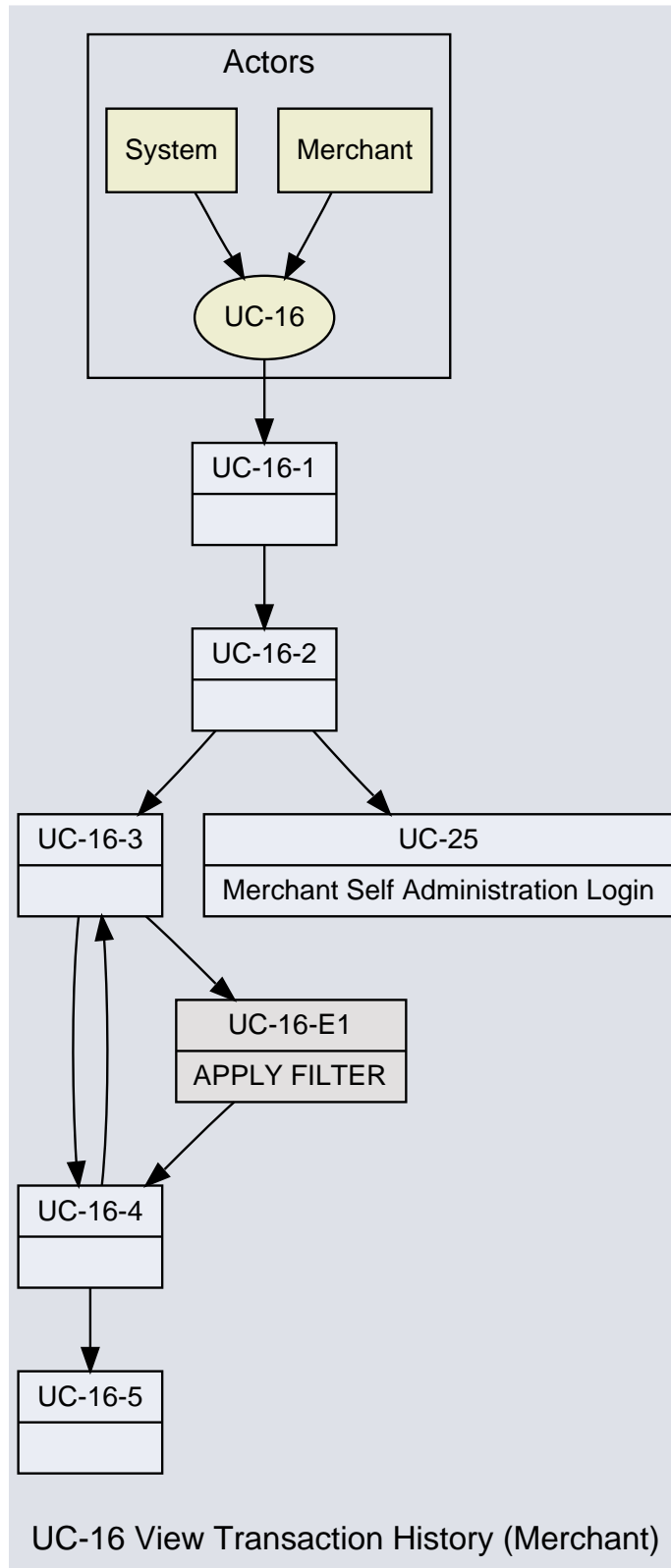


Figure 2.14. Use case diagram for use case UC-16

Response Times

immediately

Frequency Of Use

ad-hoc

Actors

- Primary: No role for actor Merchant
- Secondary: No role for actor System

Preconditions

- none

Referencing use cases:

- [\[UC-3-4 Merchant Self Administration\]](#)
- [\[UC-26-3 Manual Settlement\]](#)

Stakeholder

- Merchant wants to take a look at his/her transactions.

Success

1. UC-16-1: Merchant enters master data configuration view.
2. UC-16-2: System checks, if merchant is logged in. [\[UC-25 Merchant Self Administration Login\]](#)
3. UC-16-3: System checks, if there are any filters set. [\[UC-16-E1 APPLY FILTER\]](#)
4. UC-16-4: System displays all transactions browseable according to the filters set:
 - List with filter criterias:
 - link to view transactions with filters set. [\[UC-16-3 View Transaction History \(Merchant\)\]](#)
 - timestamp
 - amount
 - currency
 - basket information
 - dispute state
 - link to view dispute. [\[???](#)
5. UC-16-5: use case ends.

Extensions

E1: APPLY FILTER

1. UC-16-E1-1: System searches all transactions according to the filters.
2. UC-16-E1-2: System returns to [\[UC-16-4 View Transaction History \(Merchant\)\]](#) .

Guarantees

- Success: Merchant sees a list of his transactions with their state and is able to browse over it.

2.2.1.3. [UC-19] Trigger Payment

Priority

High

Scope

Micro Aggregation Merchant Self Administration

Overview

A payment will be triggered, which has to be aggregated to the consumer/merchant account.

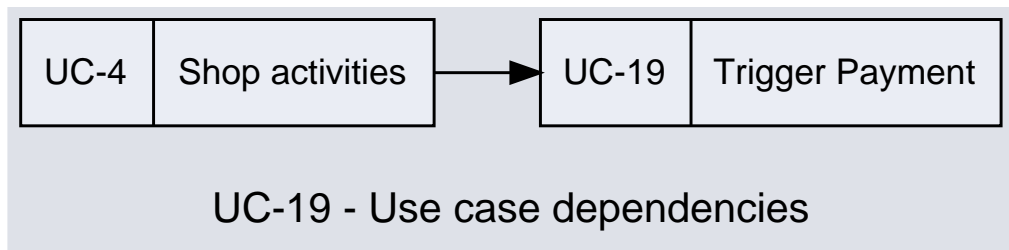


Figure 2.15. Dependency diagram for use case UC-19

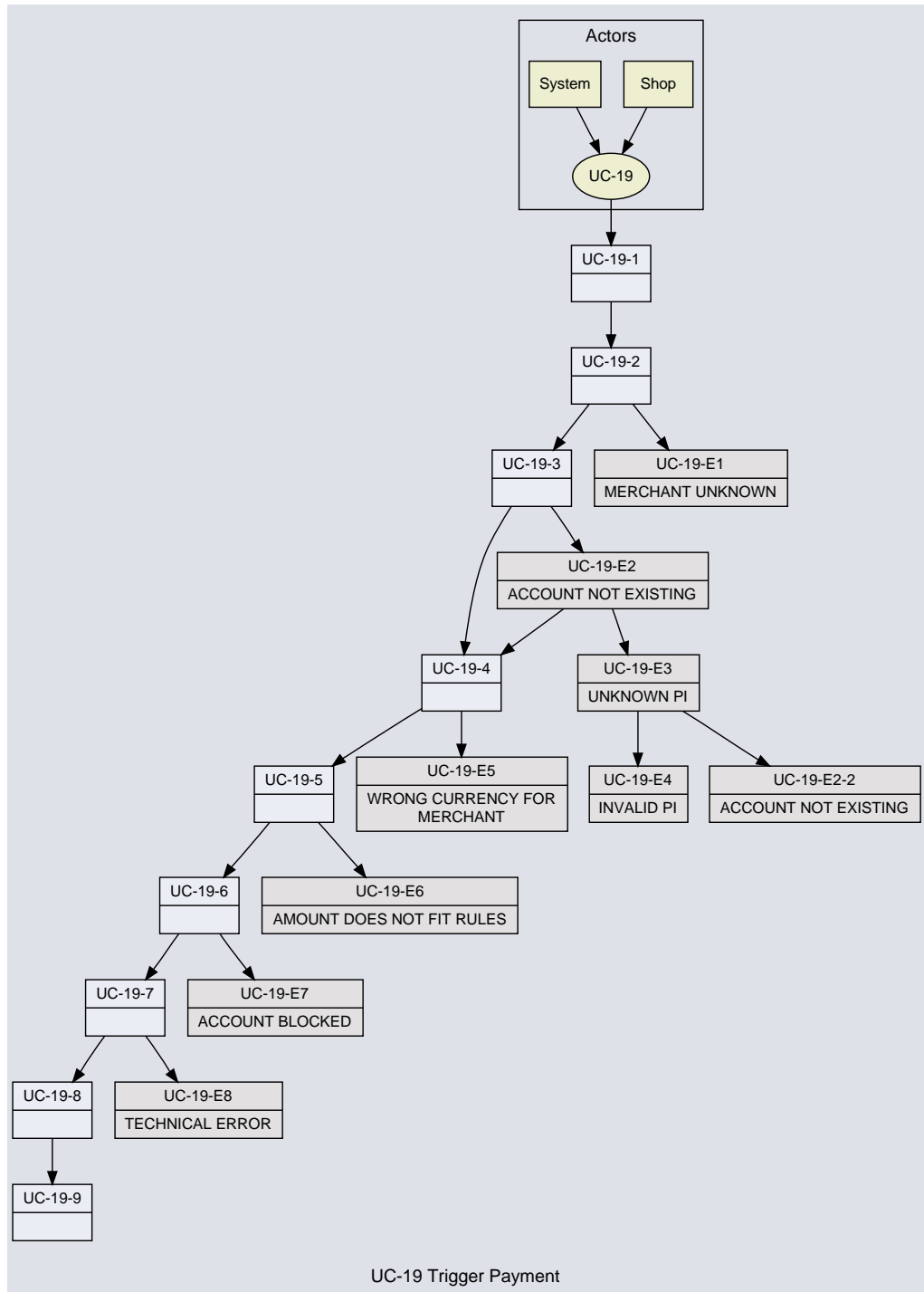


Figure 2.16. Use case diagram for use case UC-19

Response Times

immediately

Frequency Of Use

ad-hoc

Actors

- Primary: No role for actor Shop
 - Channel: Web
- Secondary: No role for actor System
 - Channel: WEB

Preconditions

- none

Referencing use cases:

- [[UC-4-1 Shop activities](#)]

Stakeholder

- Shop wants to trigger a payment, which has to be aggregated onto the account of the consumer/merchant/PI combination immediately.
- Service Provider wants to transfer responsibilities to receive the payments and to aggregate them onto the correct account.

Success

1. UC-19-1: Shop sends payment request to the system with the following data:
 - Amount
 - PI data (including account data)
 - currency
 - merchant identification
 - basket information
2. UC-19-2: System checks if merchant id is known to the system. [[UC-19-E1 MERCHANT UNKNOWN](#)]
3. UC-19-3: System checks if an account for that combination of merchant and payment instrument (PI) does exist. [[UC-19-E2 ACCOUNT NOT EXISTING](#)]
4. UC-19-4: System checks if the given currency maps to the currency deposited for the merchant. [[UC-19-E5 WRONG CURRENCY FOR MERCHANT](#)]
5. UC-19-5: System checks if the amount does fit to system rules. [[UC-19-E6 AMOUNT DOES NOT FIT RULES](#)]
6. UC-19-6: System checks if account has been blocked. [[UC-19-E7 ACCOUNT BLOCKED](#)]
7. UC-19-7: System aggregates amount to the account. [[UC-19-E8 TECHNICAL ERROR](#)]
8. UC-19-8: System notifies that the amount has been aggregated successfully.
9. UC-19-9: use case ends.

Extensions

E1: MERCHANT UNKNOWN

1. UC-19-E1-1: System logs an error.
2. UC-19-E1-2: System replies an error to the Shop with the message to use the right merchant id.
3. UC-19-E1-3: use case ends.

E2: ACCOUNT NOT EXISTING

1. UC-19-E2-1: System checks if the payment instrument is known to the system. [[UC-19-E3 UNKNOWN PI](#)]
2. UC-19-E2-2: System creates an account for that merchant/PI combination and stores the given currency to that account.
3. UC-19-E2-3: System returns to [[UC-19-4 Trigger Payment](#)]

E3: UNKNOWN PI

1. UC-19-E3-1: System checks if the payment instrument is valid. [[UC-19-E4 INVALID PI](#)]
2. UC-19-E3-2: System stores PI data to the system and returns to [[UC-19-E2-2 ACCOUNT NOT EXISTING Trigger Payment](#)]

E4: INVALID PI

1. UC-19-E4-1: System logs an error.
2. UC-19-E4-2: System replies an error that PI is not valid.
3. UC-19-E4-3: use case ends.

E5: WRONG CURRENCY FOR MERCHANT

1. UC-19-E5-1: System logs an error.
2. UC-19-E5-2: System replies an error that given currency does not match merchant currency.
3. UC-19-E5-3: use case ends.

E6: AMOUNT DOES NOT FIT RULES

1. UC-19-E6-1: System logs an error.
2. UC-19-E6-2: System replies an error that given currency violates given rules.
3. UC-19-E6-3: use case ends.

E7: ACCOUNT BLOCKED

1. UC-19-E7-1: System logs an error.
2. UC-19-E7-2: System replies an error that the account has been blocked. (eg. locked PI)
3. UC-19-E7-3: use case ends.

E8: TECHNICAL ERROR

1. UC-19-E8-1: System logs an error.
2. UC-19-E8-2: System replies that an error occurred.
3. UC-19-E8-3: use case ends.

Guarantees

- Success: Shop is notified about the correct aggregation of the amount to the relevant account.
- Minimal: Shop is notified about an error occurred and the reason or further handling.

Open Issues

1. Is a merchant id necessary or will the identity of the merchant be clarified by certificates or other security features?

2.2.1.4. [UC-22] View Transaction History (Consumer)

Priority

Unknown Priority: high - prototype

Scope

Micro Aggregation Merchant Self Administration

Overview

Possibility to view all the transactions related to an account.

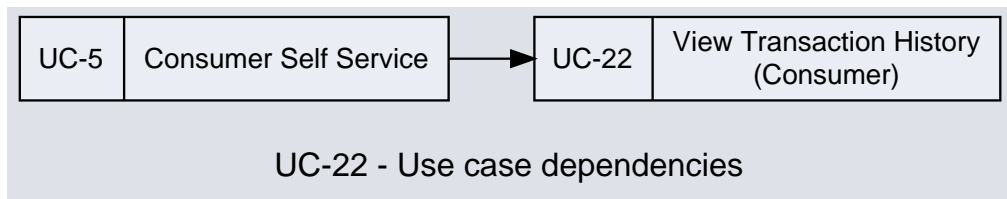


Figure 2.17. Dependency diagram for use case UC-22

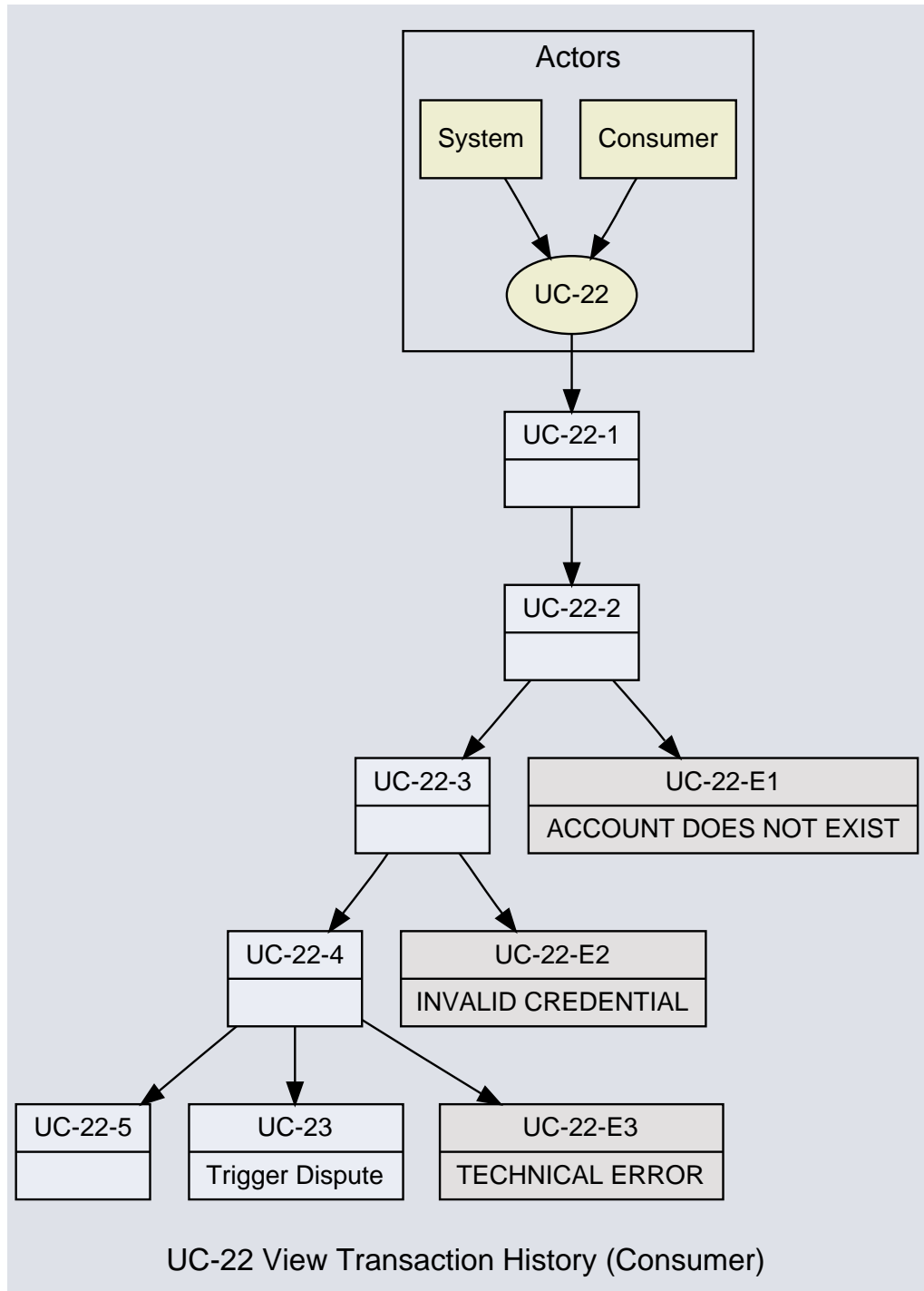


Figure 2.18. Use case diagram for use case UC-22

Response Times

immediately

Frequency Of Use

ad-hoc

Actors

- Primary: [Section 6.2.1, "Consumer [RP-90001]"]
- Secondary: No role for actor System

Preconditions

- none

Referencing use cases:

- [UC-5-1 Consumer Self Service]

Stakeholder

- Consumer wants to take a look at his/her transactions.
- Merchant wants the consumer to be aware of the transaction history.

Success

1. UC-22-1: Consumer enters the self service/transaction history view carrying the following information:
 - PI data (including account data)
 - credential
2. UC-22-2: System checks, if there is an account for the given payment instrument. [UC-22-E1 ACCOUNT DOES NOT EXIST]
3. UC-22-3: System checks, if the credential is valid for that account. [UC-22-E2 INVALID CREDENTIAL]
4. UC-22-4: System displays a list of all transactions containing the following data:
 - timestamp
 - amount
 - currency
 - basket information
 - dispute state
 - link to trigger dispute. [UC-23 Trigger Dispute]
5. UC-22-5: use case ends.

Extensions

E1: ACCOUNT DOES NOT EXIST

1. UC-22-E1-1: System logs an error.
2. UC-22-E1-2: System replies an error to the Consumer that account does not exist.
3. UC-22-E1-3: use case ends.

E2: INVALID CREDENTIAL

1. UC-22-E2-1: System logs an error.
2. UC-22-E2-2: System replies an error to the Consumer that he is not allowed to see the transaction view.
3. UC-22-E2-3: use case ends.

E3: TECHNICAL ERROR

1. UC-22-E3-1: System logs an error.
2. UC-22-E3-2: System replies an error to the Consumer that it was not possible to display transactions.
3. UC-22-E3-3: use case ends.

Guarantees

- Success: Consumer sees a list of his transactions with their state and is able to browse over it.

2.2.1.5. [UC-23] Trigger Dispute

Priority

Unknown Priority: high - prototype

Scope

Micro Aggregation Merchant Self Administration

Overview

Possibility to trigger a dispute related to a certain transaction.

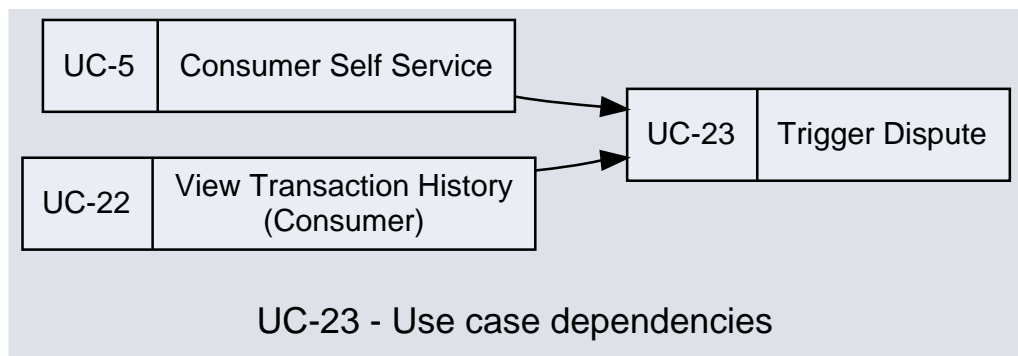


Figure 2.19. Dependency diagram for use case UC-23

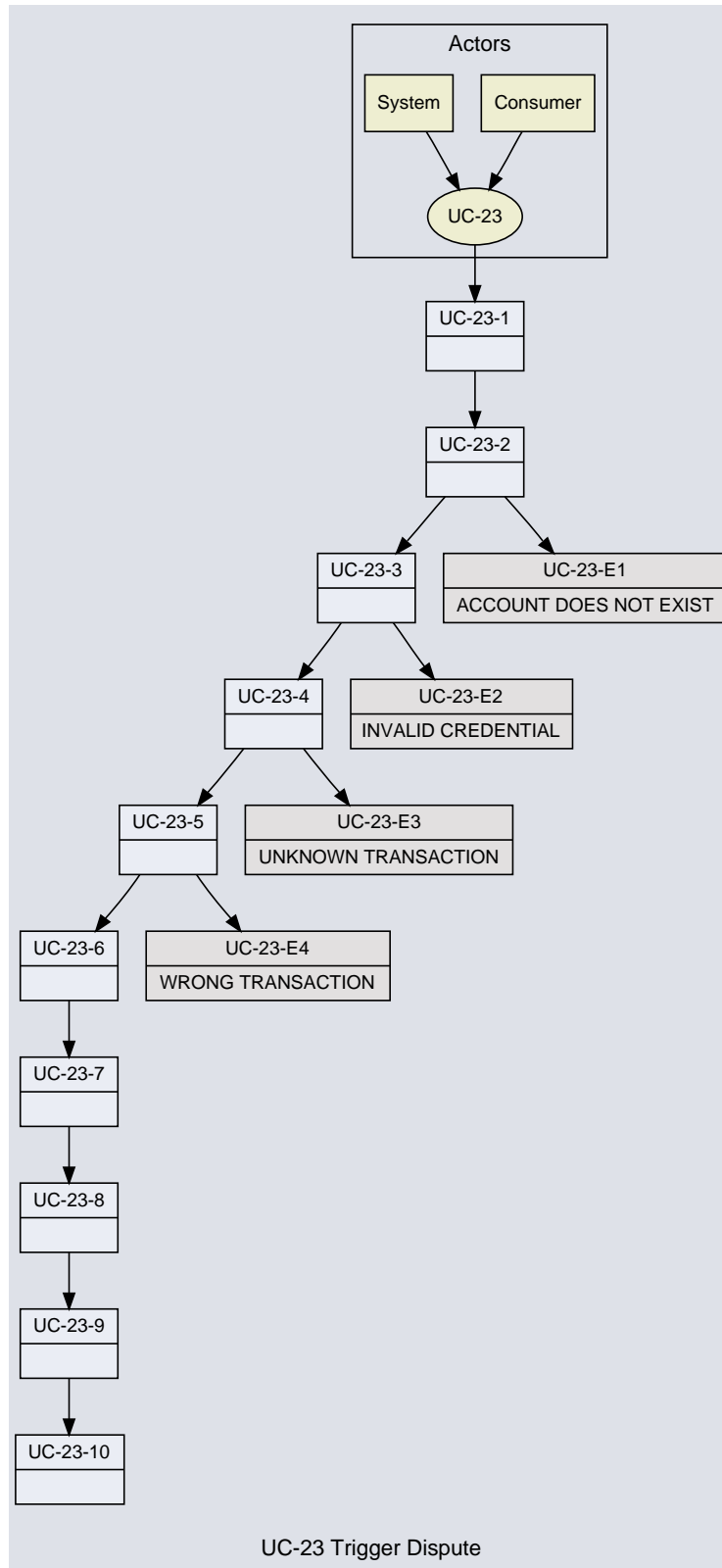


Figure 2.20. Use case diagram for use case UC-23

Response Times

immediately

Frequency Of Use

ad-hoc

Actors

- Primary: [Section 6.2.1, "Consumer [RP-90001]"]
- Secondary: No role for actor System

Preconditions

- none

Referencing use cases:

- [UC-5-2 Consumer Self Service]
- [UC-22-4 View Transaction History (Consumer)]

Stakeholder

- Consumer wants to trigger a dispute for a certain transaction.
- Merchant to have a fix way to handle disputes about transactions.

Success

1. UC-23-1: Consumer enters the dispute form carrying the following information:
<itemizedlist>
<listitem>PI data (including account data)</listitem>
<listitem>credential</listitem>
<listitem>transaction id</listitem>
</itemizedlist>
2. UC-23-2: System checks, if there is an account for the given payment instrument. [UC-23-E1 ACCOUNT DOES NOT EXIST]
3. UC-23-3: System checks, if the credential is valid for that account. [UC-23-E2 INVALID CREDENTIAL]
4. UC-23-4: System checks, if the transaction id does exist. [UC-23-E3 UNKNOWN TRANSACTION]
5. UC-23-5: System checks, if the transaction id does match to the merchant/PI account. [UC-23-E4 WRONG TRANSACTION]
6. UC-23-6: System displays a form:
<itemizedlist>
<listitem>Name</listitem>
<listitem>E-Mail</listitem>
<listitem>Reason of the dispute</listitem>
</itemizedlist>
7. UC-23-7: System stores dispute information.
8. UC-23-8: System notifies Merchant about the new dispute.
9. UC-23-9: System notifies the consumer that dispute has been forwarded to the merchant.
10. UC-23-10: use case ends.

Extensions

E1: ACCOUNT DOES NOT EXIST

1. UC-23-E1-1: System logs an error.
2. UC-23-E1-2: System replies an error to the Consumer that account does not exist.
3. UC-23-E1-3: use case ends.

E2: INVALID CREDENTIAL

1. UC-23-E2-1: System logs an error.
2. UC-23-E2-2: System replies an error to the Consumer that he is not allowed to see the transaction view.
3. UC-23-E2-3: use case ends.

E3: UNKNOWN TRANSACTION

1. UC-23-E3-1: System logs an error.
2. UC-23-E3-2: System replies an error to the Consumer that transaction is not known to the system.
3. UC-23-E3-3: use case ends.

E4: WRONG TRANSACTION

1. UC-23-E4-1: System logs an error.
2. UC-23-E4-2: System replies an error to the Consumer that the transaction is not related to the consumers account.
3. UC-23-E4-3: use case ends.

Guarantees

- Success: Consumer is notified that dispute has been received by the merchant.

2.2.1.6. [UC-25] Merchant Self Administration Login

Priority

High

Scope

Micro Aggregation Merchant Self Administration

Overview

To enter the merchant self administration, you have to be authorized.

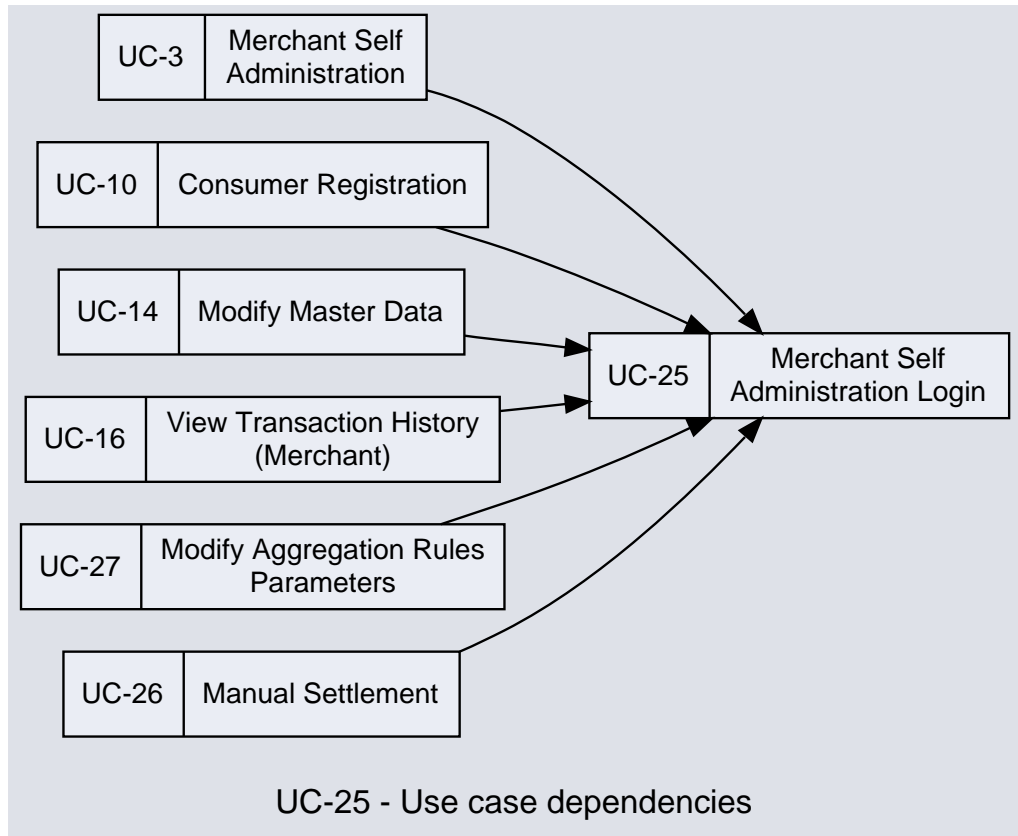


Figure 2.21. Dependency diagram for use case UC-25

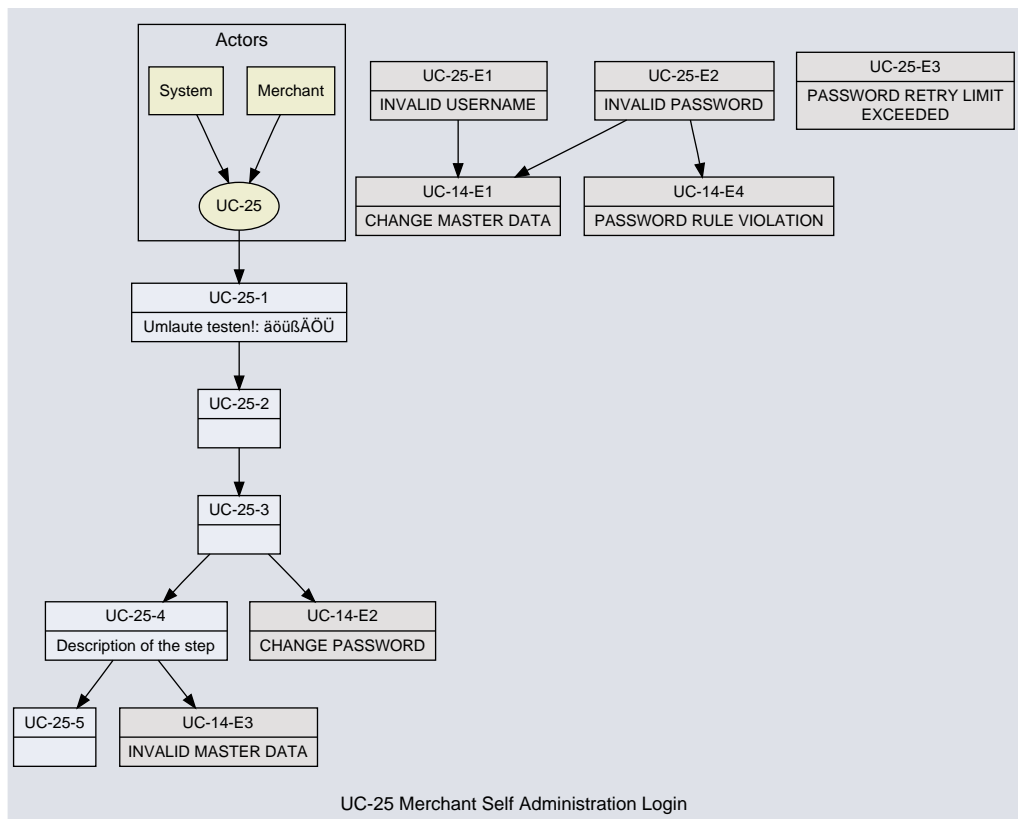


Figure 2.22. Use case diagram for use case UC-25

Response Times

immediately

Frequency Of Use

ad-hoc

Actors

- Primary: No role for actor Merchant
 - Channel: Web
- Secondary: No role for actor System
 - Channel: WEB

Preconditions

- none

Referencing use cases:

- [\[UC-3-1 Merchant Self Administration\]](#)
- [\[UC-10-8 Consumer Registration\]](#)
- [\[UC-14-2 Modify Master Data\]](#)
- [\[UC-16-2 View Transaction History \(Merchant\)\]](#)
- [\[UC-27 Modify Aggregation Rules Parameters\]](#)
- [\[UC-27-2 Modify Aggregation Rules Parameters\]](#)
- [\[UC-26-2 Manual Settlement\]](#)

Stakeholder

- Merchant wants to enter the self administration. Merchants do not want others to enter their self administration.
- Service Provider wants to enable only authorized merchants to enter only their self administration.

Success

1. UC-25-1 [Umlaute testen!: äöüßÄÖÜ]: System prompts for user and password.
2. UC-25-2: Merchant enters username and password and submits.
3. UC-25-3: System checks username. [\[UC-14-E2 CHANGE PASSWORD\]](#)
4. UC-25-4 [Description of the step]: System checks password. [\[UC-14-E3 INVALID MASTER DATA\]](#)
5. UC-25-5: System returns to caller (calling use case).

Extensions

E1: INVALID USERNAME

1. UC-25-E1-1: System logs a failed login.
2. UC-25-E1-2: System replies an error to the Merchant that username or password is not valid.
3. UC-25-E1-3: return to [\[UC-14-E1 CHANGE MASTER DATA\]](#) .

E2: INVALID PASSWORD

1. UC-25-E2-1: System logs a failed login.
2. UC-25-E2-2: System checks if failed login retry limit was exceeded. [\[UC-14-E4 PASSWORD RULE VIOLATION\]](#)

3. UC-25-E2-3: System replies an error to the Merchant that username or password is not valid.
4. UC-25-E2-4: return to [\[UC-14-E1 CHANGE MASTER DATA\]](#) .

E3: PASSWORD RETRY LIMIT EXCEEDED

1. UC-25-E3-1: System logs a security fraud.
2. UC-25-E3-2: System locks the merchant administration account.
3. UC-25-E3-3: System notifies merchant that the account has been locked due to maximum retries with wrong password.
4. UC-25-E3-4: use case ends.

Guarantees

- Success: Merchant has been authorized to enter the merchant self administration.
- Minimal: Merchant is notified, why he cannot enter the self administration.

2.2.1.7. [UC-26] Manual Settlement

Priority

Unknown Priority: high - prototype

Scope

Micro Aggregation Merchant Self Administration

Overview

Possibility to trigger settlement for an account manually.

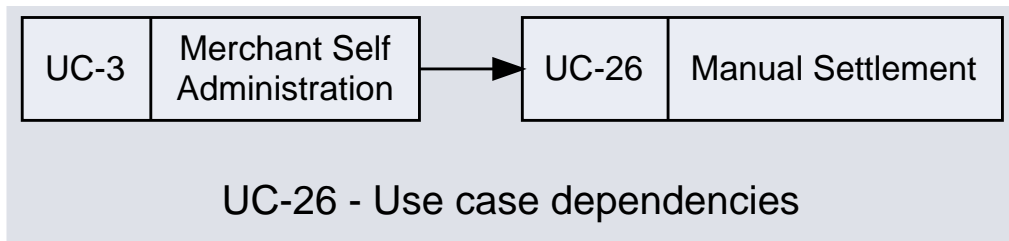


Figure 2.23. Dependency diagram for use case UC-26

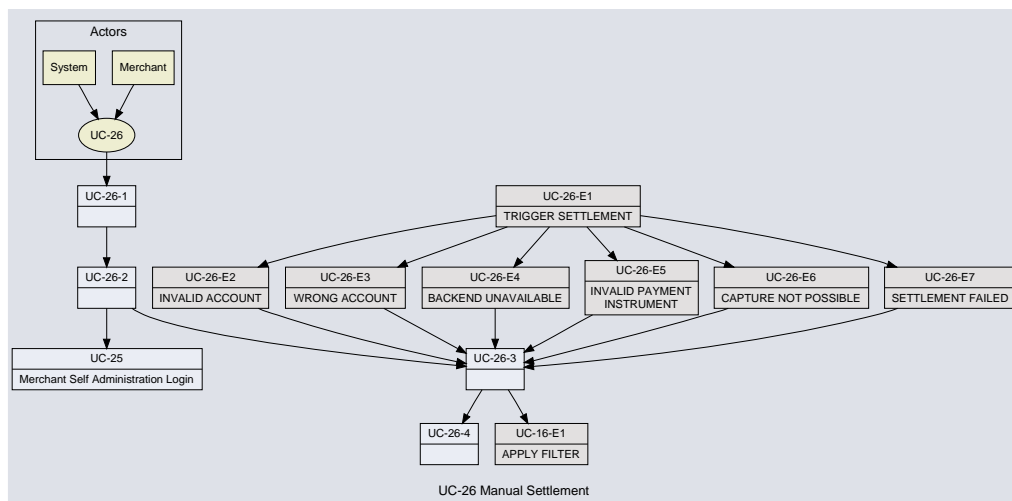


Figure 2.24. Use case diagram for use case UC-26

Response Times

immediately

Frequency Of Use

ad-hoc

Actors

- Primary: No role for actor Merchant
- Secondary: No role for actor System

Preconditions

- none

Referencing use cases:

- [\[UC-3-7 Merchant Self Administration\]](#)

Stakeholder

- Merchant wants to trigger the settlement for an account manually.
- Service Provider wants to enable the merchant to settle at will.

Success

1. UC-26-1: Merchant enters manual settlement form.
2. UC-26-2: System checks, if merchant is logged in. [\[UC-25 Merchant Self Administration Login\]](#)
3. UC-26-3: System displays a settlement form:
 - account id
 - link to invoke the settlement. [\[UC-16-E1 APPLY FILTER\]](#)
4. UC-26-4: use case ends.

Extensions

E1: TRIGGER SETTLEMENT

1. UC-26-E1-1: System checks, if the account does exist. [\[UC-26-E2 INVALID ACCOUNT\]](#)
2. UC-26-E1-2: System checks, if the account does relate to the merchant. [\[UC-26-E3 WRONG ACCOUNT\]](#) .
3. UC-26-E1-3: System forwards the aggregated amount and currency to the Payment Issuer for the involved payment instrument. [\[UC-26-E4 BACKEND UNAVAILABLE\]](#)
4. UC-26-E1-4: System checks response, if the PI was invalid. [\[UC-26-E5 INVALID PAYMENT INSTRUMENT\]](#)
5. UC-26-E1-5: System checks response, if the amount could not be captured. [\[UC-26-E6 CAPTURE NOT POSSIBLE\]](#)
6. UC-26-E1-6: System checks response, if the settlement was successfully. [\[UC-26-E7 SETTLEMENT FAILED\]](#)

7. UC-26-E1-7: System notifies merchant, that settlement successfully.
8. UC-26-E1-8: use case ends.

E2: INVALID ACCOUNT

1. UC-26-E2-1: System logs an error.
2. UC-26-E2-2: System notifies merchant, that this account does not exist.
3. UC-26-E2-3: System returns to [[UC-26-3 Manual Settlement](#)] .

E3: WRONG ACCOUNT

1. UC-26-E3-1: System logs an error.
2. UC-26-E3-2: System notifies merchant, that this account is not related to him.
3. UC-26-E3-3: System returns to [[UC-26-3 Manual Settlement](#)] .

E4: BACKEND UNAVAILABLE

1. UC-26-E4-1: System logs an error.
2. UC-26-E4-2: System notifies merchant, that the backend for this payment instrument is not available.
3. UC-26-E4-3: System returns to [[UC-26-3 Manual Settlement](#)] .

E5: INVALID PAYMENT INSTRUMENT

1. UC-26-E5-1: System logs an error.
2. UC-26-E5-2: System notifies merchant, that the payment instrument is invalid.
3. UC-26-E5-3: System returns to [[UC-26-3 Manual Settlement](#)] .

E6: CAPTURE NOT POSSIBLE

1. UC-26-E6-1: System logs an error.
2. UC-26-E6-2: System notifies merchant, that the capture for the amount failed. (maybe limit exceeded)
3. UC-26-E6-3: System returns to [[UC-26-3 Manual Settlement](#)] .

E7: SETTLEMENT FAILED

1. UC-26-E7-1: System logs an error.
2. UC-26-E7-2: System notifies merchant, that settlement failed .
3. UC-26-E7-3: System returns to [[UC-26-3 Manual Settlement](#)] .

Guarantees

- Success: Merchant could trigger the settlement for a certain merchant/PI account manually.

2.2.1.8. [UC-27] Modify Aggregation Rules Parameters

Priority

Unknown Priority: high - prototype

Scope

Micro Aggregation Merchant Self Administration

Overview

Possibility to modify the parameters of the predefined aggregation rules.

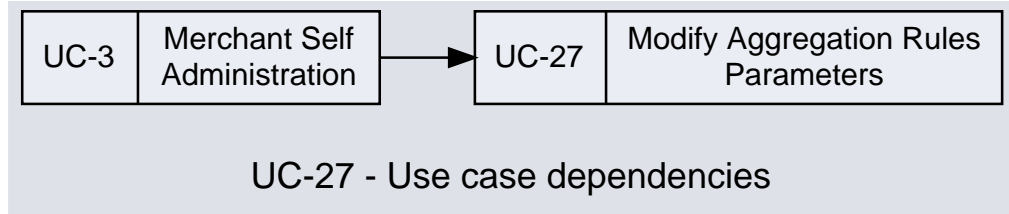


Figure 2.25. Dependency diagram for use case UC-27

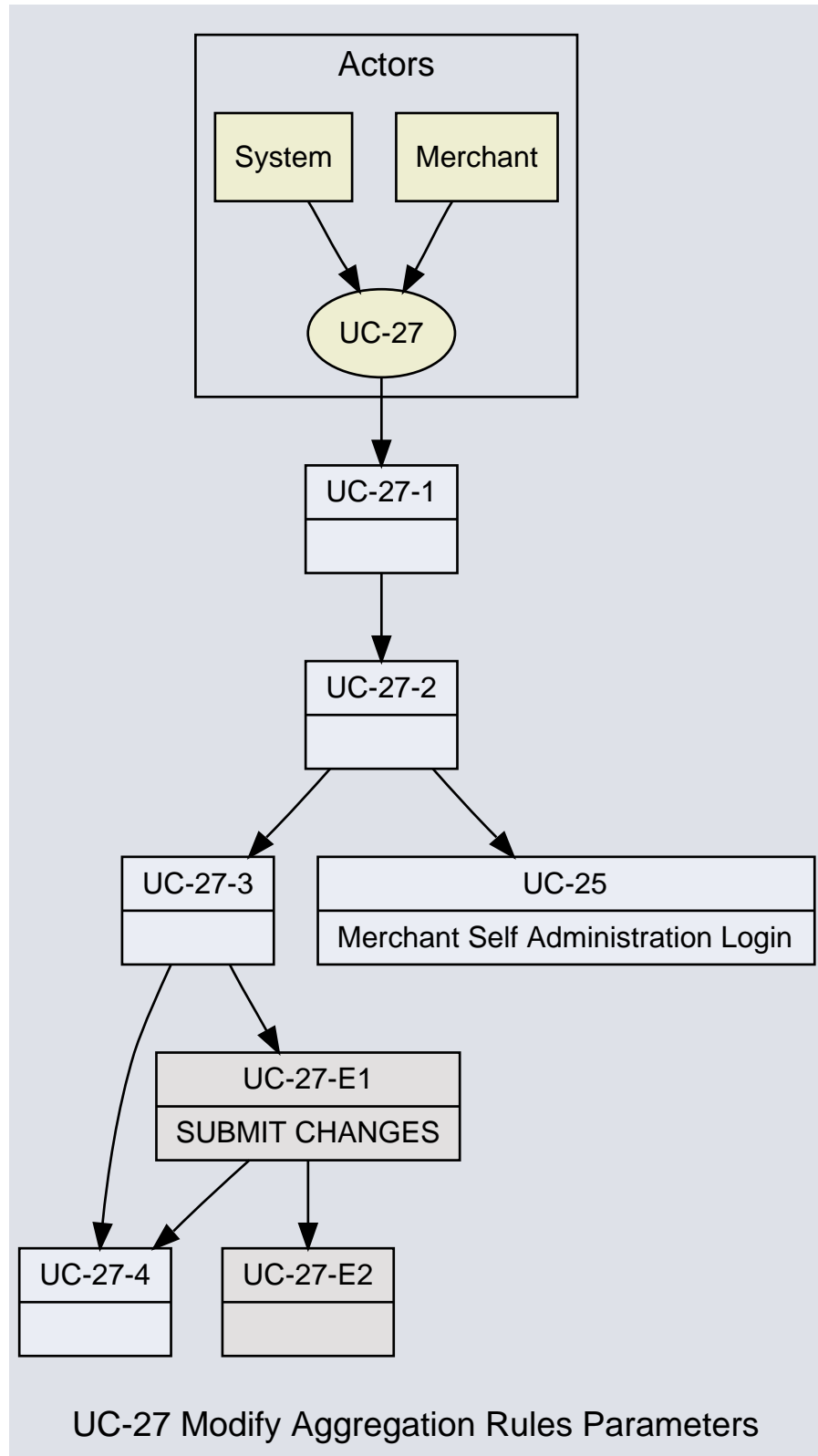


Figure 2.26. Use case diagram for use case UC-27

Response Times

immediately

Frequency Of Use

ad-hoc

Actors

- Primary: No role for actor Merchant
- Secondary: No role for actor System

Preconditions

- The use case [[UC-25 Merchant Self Administration Login](#)] has to be executed before.

Referencing use cases:

- [[UC-3-8 Merchant Self Administration](#)]

Stakeholder

- Merchant wants to have the aggregation of the micro payment amounts to be settled due to certain conditions.
- Service Provider wants to transfer the responsibility to define the aggregation parameters to the merchant.

Success

1. UC-27-1: Merchant enters aggregation rules parameters configuration view.
2. UC-27-2: System checks, if merchant is logged in. [[UC-25 Merchant Self Administration Login](#)]
3. UC-27-3: System displays the aggregation rules with their editable parameters:

```
<itemizedlist>  
<listitem>minimum amount limit</listitem>  
<listitem>maximum amount limit</listitem>  
<listitem>time passed since last settlement</listitem>  
<listitem>link to submit the changed data. [UC-27-E1 SUBMIT CHANGES] </listitem>  
</itemizedlist>
```
4. UC-27-4: use case ends.

Extensions

E1: SUBMIT CHANGES

1. UC-27-E1-1: System checks, if the aggregation rules parameters against system rules. [???
2. UC-27-E1-2: System stores the new aggregation rules parameters
3. UC-27-E1-3: System returns to [[UC-27-4 Modify Aggregation Rules Parameters](#)].

Guarantees

- Success: Merchant could set the parameters for the aggregation rules successfully.

Open Issues

1. What are other aggregation rules?

2.2.2. m-Wallet

2.2.2.1. [UC-10] Consumer Registration

Priority

High

Scope

m-Wallet

Overview

Consumer has been registered to the **m-Wallet**.

Consumer has been registered to the m-Wallet.

- foo
- bar

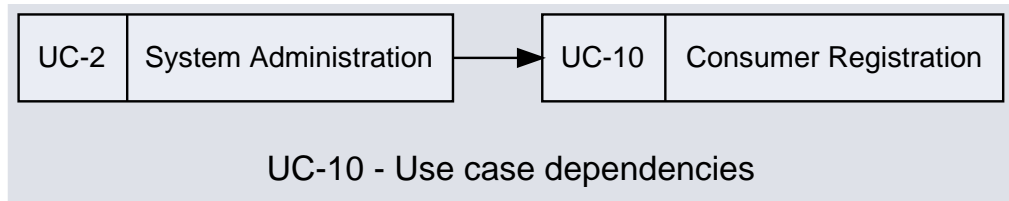


Figure 2.27. Dependency diagram for use case UC-10

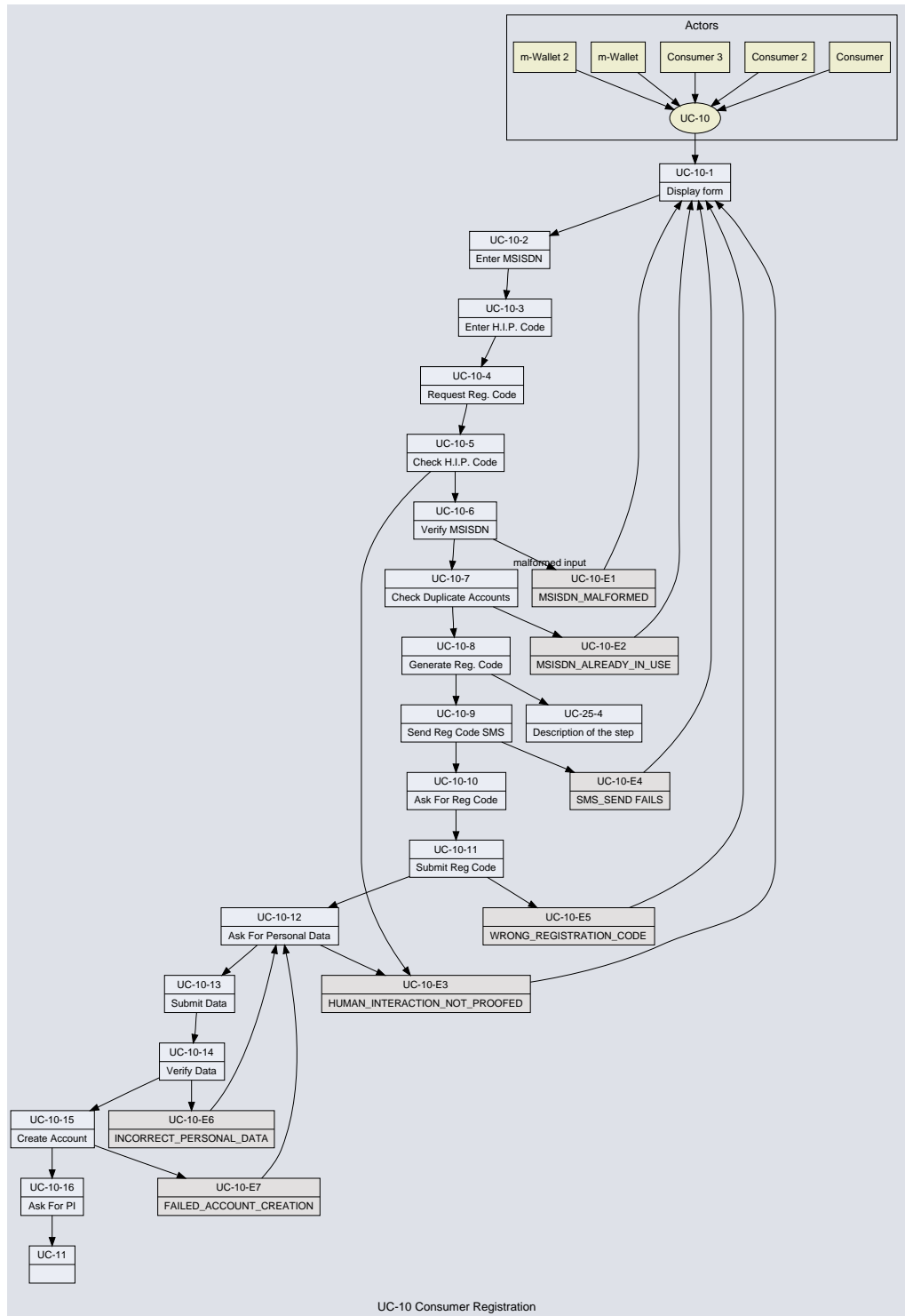


Figure 2.28. Use case diagram for use case UC-10

Response Times

immediately

Frequency Of Use

ad-hoc

Actors

- Primary: [[Section 6.2.1, "Consumer \[RP-90001\]"](#)]
 - Channel: Web
- Primary: No role for actor Consumer 2
 - Channel: Web
- Primary: No role for actor Consumer 3
 - Channel: Web
- Secondary: No role for actor m-Wallet
 - Channel: Web
- Secondary: No role for actor m-Wallet 2
 - Channel: Web

Preconditions

- System up and running

Referencing use cases:

- [[UC-2-4 System Administration](#)]

Referencing requirements:

- [[Section 4.4.1, "Product \[D-90013\]"](#)]

Stakeholder

- Service Provider wants to get all relevant data of the consumer.
- Consumer wants to be able to top-up his registered account and to use his account to purchase things.
- Merchant wants to provide the consumer to register easily to a payment system, that he will be able to buy goods easily.

Success

1. UC-10-1 [Display form]: System sends initial formular asking for the MSISDN of the Consumer.
2. UC-10-2 [Enter MSISDN]: Consumer enters his MSISDN.
3. UC-10-3 [Enter H.I.P. Code]: Consumer enters "human-only-readable" letters from a picture (e.g. Human Interactive Proof-Technologie).
4. UC-10-4 [Request Reg. Code]: Consumer requests registration code..
5. UC-10-5 [Check H.I.P. Code]: System checks entered human interaction proof text. [[UC-10-E3 HUMAN_INTERACTION_NOT_PROOFED](#)]
6. UC-10-6 [Verify MSISDN]: System verifies the MSISDN. [[UC-10-E1 MSISDN_MALFORMED](#)]
7. UC-10-7 [Check Duplicate Accounts]: System checks for an account [[D-90021-Axle](#)] already existing. [[UC-10-E2 MSISDN_ALREADY_IN_USE](#)]
8. UC-10-8 [Generate Reg. Code]: System generates registration code. Dummy reference to other use case step [[UC-25-4 Merchant Self Administration Login](#)]
9. UC-10-9 [Send Reg Code SMS]: System sends SMS containing registration code to MSISDN. [[UC-10-E4 SMS_SEND FAILS](#)]

- 10UC-10-10 [Ask For Reg Code]: System asks for registration code.
- 11UC-10-11 [Submit Reg Code]: Consumer enters registration code and submits form. (Requirement: [???) [[UC-10-E5 WRONG_REGISTRATION_CODE](#)]
- 12UC-10-12 [Ask For Personal Data]: System asks for consumer personal data. [???)
 - first name
 - last name
 - password [[UC-10-E3 HUMAN_INTERACTION_NOT_PROOFED](#)]
 - confirmation of the terms and conditions.
- 13UC-10-13 [Submit Data]: After filling out the form the consumer submits.
- 14UC-10-14 [Verify Data]: System verifies given master data. [[UC-10-E6 INCORRECT_PERSONAL_DATA](#)]
- 15UC-10-15 [Create Account]: System creates account with all the data given. [[UC-10-E7 FAILED_ACCOUNT_CREATION](#)]
- 16UC-10-16 [Ask For PI]: Consumer will be asked about to configure a payment instrument. [???)

Extensions

E1: MSISDN_MALFORMED

- 1. UC-10-E1-1 [aha]: System logs a warning.
- 2. UC-10-E1-2 [oho]: System replies an error to the Consumer, that the MSISDN was malformed.
- 3. UC-10-E1-3: back to registration formular. [[UC-10-1 Consumer Registration](#)]

E2: MSISDN_ALREADY_IN_USE

- 1. UC-10-E2-1: System logs a warning.
- 2. UC-10-E2-2: System replies an error to the Consumer, that the MSISDN is already in use with an account.
- 3. UC-10-E2-3: back to registration formular. [[UC-10-1 Consumer Registration](#)]

E3: HUMAN_INTERACTION_NOT_PROOFED

- 1. UC-10-E3-1: System logs a warning.
- 2. UC-10-E3-2: System replies an error to the Consumer, that the text for human interaction proof was not entered correctly.
- 3. UC-10-E3-3: Back to registration formular. The Human Interaction Proof will be changed. [[UC-10-1 Consumer Registration](#)]

E4: SMS_SEND FAILS

- 1. UC-10-E4-1: System logs an error.
- 2. UC-10-E4-2: System replies an error to the Consumer, that the sending of the SMS failed and informs about the reason of the failure, if available.
- 3. UC-10-E4-3: Back to registration formular. The Human Interaction Proof will be changed. [[UC-10-1 Consumer Registration](#)]

E5: WRONG_REGISTRATION_CODE

- 1. UC-10-E5-1: System logs a warning.
- 2. UC-10-E5-2: System replies to the Consumer, that the registration code he entered was wrong.

3. UC-10-E5-3: Back to registration formular. [[UC-10-1 Consumer Registration](#)]

E6: INCORRECT_PERSONAL_DATA

1. UC-10-E6-1: System logs a warning.
2. UC-10-E6-2: System replies to consumer, which personal data fields were not filled correctly.
3. UC-10-E6-3: Back to registration formular. [[UC-10-12 Consumer Registration](#)]

E7: FAILED_ACCOUNT_CREATION

1. UC-10-E7-1: System logs an error.
2. UC-10-E7-2: System replies to the Consumer, that the creation of his account failed giving the reason if available.
3. UC-10-E7-3: Back to registration formular. [[UC-10-12 Consumer Registration](#)]

Guarantees

- Success: Consumer is registered to the system. All relevant consumer data are stored.
- Minimal: Consumer gets knowledge about the failure of the registration and the reason about it.

Testing Annotations / Examples

1. This is an example for testing
2. Some testing blablub
3. • Some testing blablub
 - Another testing blablub

Open Issues

1. After entering a wrong registration code, is it okay to start from entering the MSISDN on or should there be a retry mechanism starting from UC-10-8 or UC-10-10 directly?
2. Should the consumer personal data formular be extracted into another use case?
3. What are the exact checks in [[UC-10-14 Consumer Registration](#)] ? Should they be detailed here.
4. To avoid usage of human interaction proof, it is a better way that consumern sends SMS to the wallet, to register his MSISDN?

Chapter 3. Functional Requirement

3.1. Organizational Structure

3.1.1. Global Requirement. [DUMMY] [F-11]

Priority: High

Release Version:

This requirement is referenced by the following use cases:

- [UC-5 Consumer Self Service](#)

A functional requirement

Chapter 4. Domain Model

4.1. Complete Domain Model - Detailed

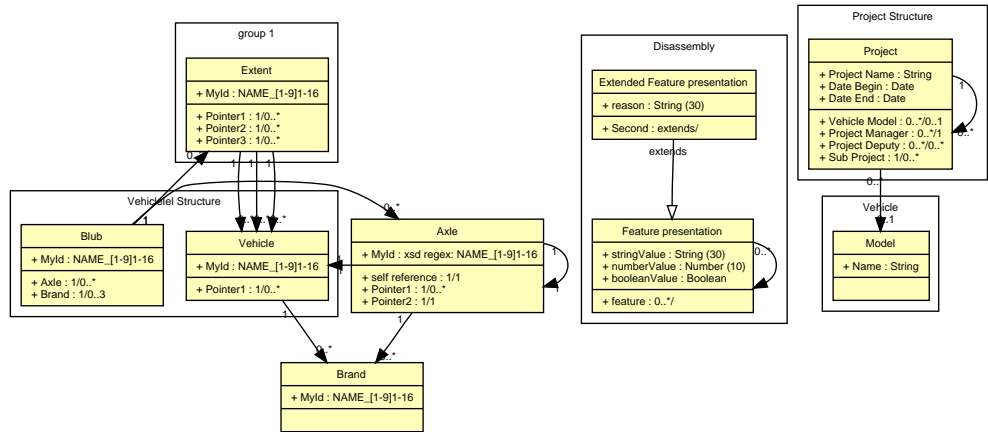


Figure 4.1. Complete Domain Model - Detailed

4.2. Axle [D-90005]

Priority: High
 Release Version: 1.4

The term 'axle' is new. Currently there exists no auxiliary term 'axle vehicle'.

The axle must fulfill following functional requirements:

- [Section 3.1.1, "Global Requirement. [DUMMY] [F-11]"]

See also: [D-90006-MyId] . list of referenced data models:

Table 4.1. Entity Summary

| Axle | | | | |
|--|---|----------|-------------|---------------------------|
| <ul style="list-style-type: none"> • (de) Achse • (alias) Axis | | | | |
| Constraints | | | | |
| Attribute | Reference To | Relation | Constraints | Pattern |
| MyId | | | | xsd regex: NAME_[1-9]1-16 |
| Attribute description is here. | | | | |
| self reference | [1/1] Section 4.2, "Axle [D-90005]" | 1 : 1 | | |
| Pointer1 | [1/0..*] Section 4.3, "Brand [D-90006]" | 1 : 0..* | | |
| Pointer2 | [1/1] Section 4.6.1, | 1 : 1 | | |

| | | | | |
|--|---------------------|--|--|--|
| | "Vehicle [D-90007]" | | | |
|--|---------------------|--|--|--|

Table 4.2. Referring Entities

| Entity | Relation | Constraints | Pattern |
|-------------------------------------|----------|-------------|---------|
| [Section 4.2, "Axle [D-90005]"] | 1:1 | | |
| [Section 4.6.2.1, "Blub [D-90021]"] | 1:0..* | | |

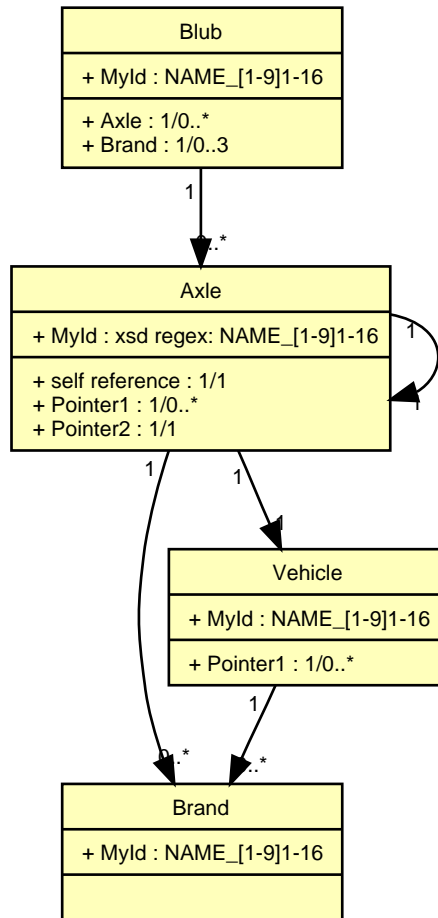


Figure 4.2. Domain model diagram for entity D-90005 Axle

4.3. Brand [D-90006]

Priority: High
Release Version: 1.3

Some mind numbing texts

Table 4.3. Entity Summary

| <i>Brand</i> | |
|--------------|------------|
| • | (de) Marke |

| | | | | |
|--------------------|---------------------|-----------------|--------------------|----------------|
| • (de) MeineMarke | | | | |
| Constraints | | | | |
| Attribute | Reference To | Relation | Constraints | Pattern |
| <i>MyId</i> | | | | NAME_[1-9]1-16 |

Table 4.4. Referring Entities

| Entity | Relation | Constraints | Pattern |
|--------------------------------------|----------|-------------|---------|
| [Section 4.2, "Axle [D-90005]"] | 1:0..* | | |
| [Section 4.6.1, "Vehicle [D-90007]"] | 1:0..* | | |

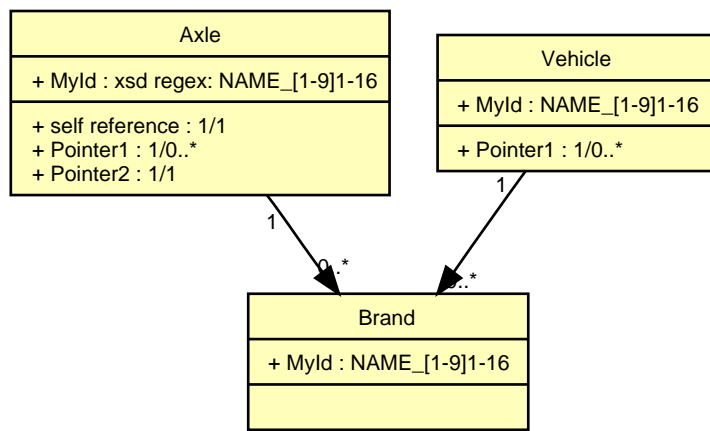


Figure 4.3. Domain model diagram for entity D-90006 Brand

Open Issues

- Example open issue
- Second Example open issue

4.4. Organizational Structure

Figure 4.4. Domain model for category Organizational Structure.

4.4.1. Product [D-90013]

Priority: High
 Release Version: 1.3

A Data Model This is a reference to a use case [UC-10 Consumer Registration] .

4.5. group 1

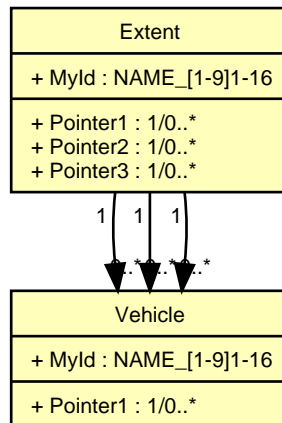


Figure 4.5. Domain model for category group 1.

4.5.1. Extent [D-90012]

Priority: High

Release Version:

Table 4.5. Entity Summary

| <i>Extent</i> | | | | |
|-----------------|---|----------|-------------|----------------|
| Constraints | | | | |
| Attribute | Reference To | Relation | Constraints | Pattern |
| <i>MyId</i> | | | | NAME_[1-9]1-16 |
| <i>Pointer1</i> | [1/0..*] Section 4.6.1, "Vehicle [D-90007]" | 1 : 0..* | | |
| <i>Pointer2</i> | [1/0..*] Section 4.6.1, "Vehicle [D-90007]" | 1 : 0..* | | |
| <i>Pointer3</i> | [1/0..*] Section 4.6.1, "Vehicle [D-90007]" | 1 : 0..* | | |

Table 4.6. Referring Entities

| Entity | Relation | Constraints | Pattern |
|-------------------------------------|----------|-------------|---------|
| [Section 4.6.2.1, "Blub [D-90021]"] | 1:0..3 | | |

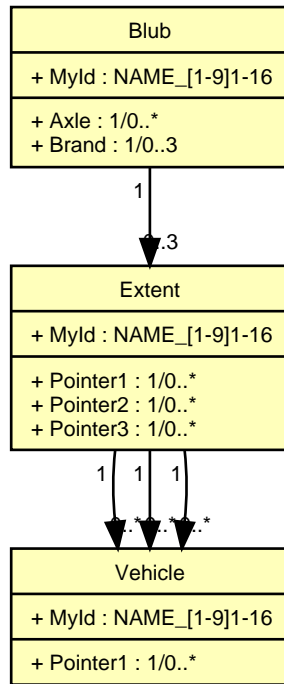


Figure 4.6. Domain model diagram for entity D-90012 Extent

4.6. Vehiclelel Structure

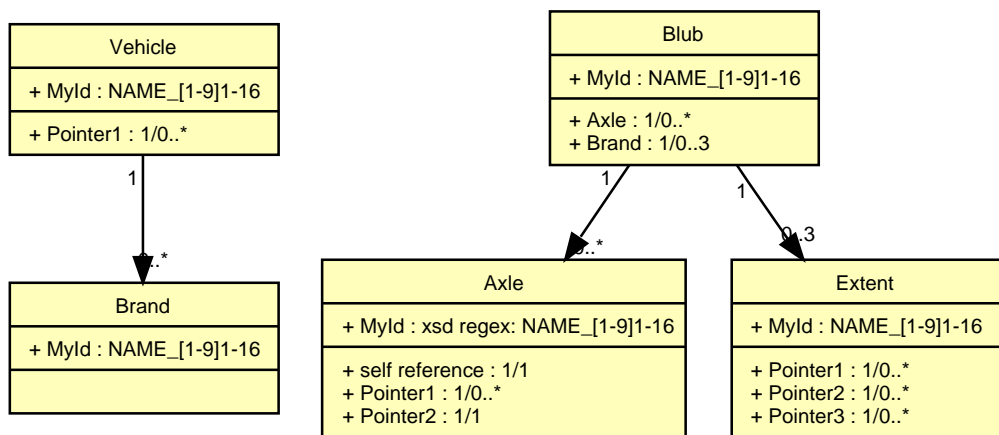


Figure 4.7. Domain model for category Vehiclelel Structure.

4.6.1. Vehicle [D-90007]

Priority: High

Release Version: 1.5

stunning revolutionary entity

Table 4.7. Entity Summary

| |
|----------------|
| Vehicle |
|----------------|

| Constraints | | | | |
|-----------------|---|----------|-------------|----------------|
| Attribute | Reference To | Relation | Constraints | Pattern |
| <i>MyId</i> | | | | NAME_[1-9]1-16 |
| | Meine ID Formerly Known as Symbol. | | | |
| <i>Pointer1</i> | [1/0..*] Section 4.3, "Brand [D-90006]" | 1 : 0..* | | |

Table 4.8. Referring Entities

| Entity | Relation | Constraints | Pattern |
|---|----------|-------------|---------|
| [Section 4.2, "Axle [D-90005]"] | 1:1 | | |
| [Section 4.5.1, "Extent [D-90012]"] | 1:0..* | | |
| [Section 4.5.1, "Extent [D-90012]"] | 1:0..* | | |
| [Section 4.5.1, "Extent [D-90012]"] | 1:0..* | | |

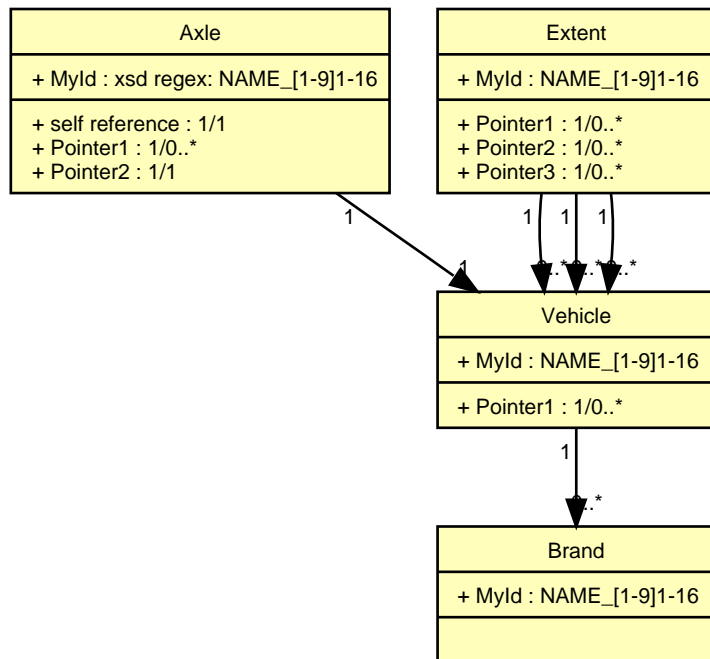


Figure 4.8. Domain model diagram for entity D-90007 Vehicle

4.6.2. Grumpf

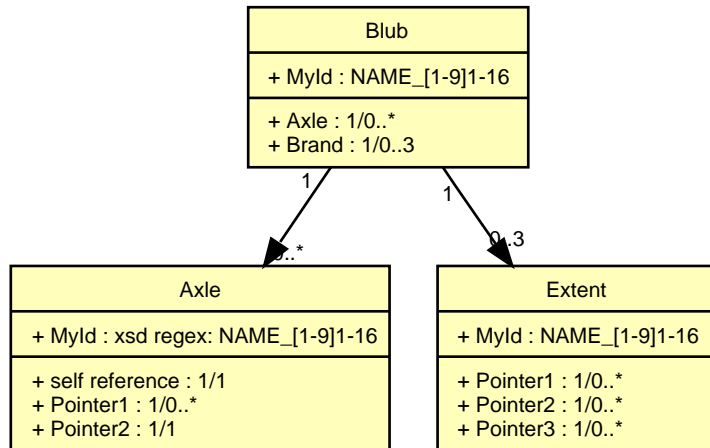


Figure 4.9. Domain model for category Grumpf

4.6.2.1. Blub [D-90021]

Priority: High

Release Version: 1.5

stunning revolutionary entity

Table 4.9. Entity Summary

| <i>Blub</i> | | | | |
|--------------|--|----------|-------------|----------------|
| Constraints | | | | |
| Attribute | Reference To | Relation | Constraints | Pattern |
| <i>MyId</i> | | | | NAME_[1-9]1-16 |
| <i>Axle</i> | [1/0..*] Section 4.2, "Axle [D-90005]" | 1 : 0..* | | |
| <i>Brand</i> | [1/0..3] Section 4.5.1, "Extent [D-90012]" | 1 : 0..3 | | |

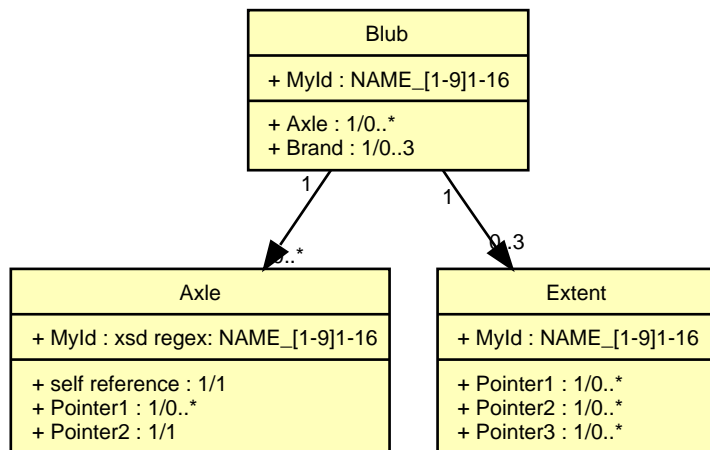


Figure 4.10. Domain model diagram for entity D-90021 Blub

4.7. Disassembly

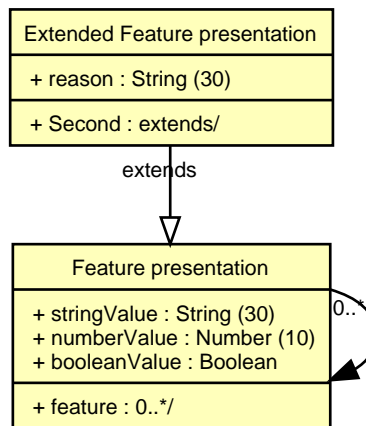


Figure 4.11. Domain model for category Disassembly.

4.7.1. Extended Feature presentation [D-10035]

Priority: High
 Release Version: 1.2

The extended feature presentation is an extension of the standard feature presentation.

Table 4.10. Entity Summary

| <i>Extended Feature presentation</i> | | | | |
|--------------------------------------|---|-----------|-------------|-------------|
| Constraints | | | | |
| Attribute | Reference To | Relation | Constraints | Pattern |
| <i>reason</i> | | | | String (30) |
| <i>Second</i> | [extends/] Section 4.7.2, "Feature presentation [D-10034]" | extends : | | |

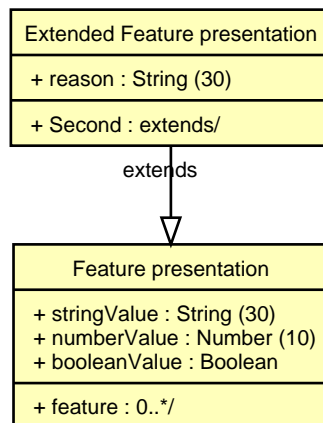


Figure 4.12. Domain model diagram for entity D-10035 Extended Feature presentation

4.7.2. Feature presentation [D-10034]

Priority: High
 Release Version: 1.2

Table 4.11. Entity Summary

| <i>Feature presentation</i> | | | | |
|-----------------------------|---|----------|-------------|-------------|
| Constraints | | | | |
| Attribute | Reference To | Relation | Constraints | Pattern |
| <i>stringValue</i> | | | | String (30) |
| <i>numberValue</i> | | | | Number (10) |
| <i>booleanValue</i> | | | | Boolean |
| <i>feature</i> | [0..*/] Section 4.7.2, "Feature presentation [D-10034]" | 0..* : | | |

Table 4.12. Referring Entities

| Entity | Relation | Constraints | Pattern |
|--|----------|-------------|---------|
| [Section 4.7.2, "Feature presentation [D-10034]"] | 0..* : | | |
| [Section 4.7.1, "Extended Feature presentation [D-10035]"] | extends: | | |

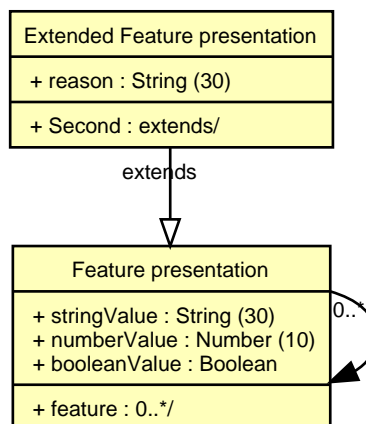


Figure 4.13. Domain model diagram for entity D-10034 Feature presentation

4.8. Project Structure

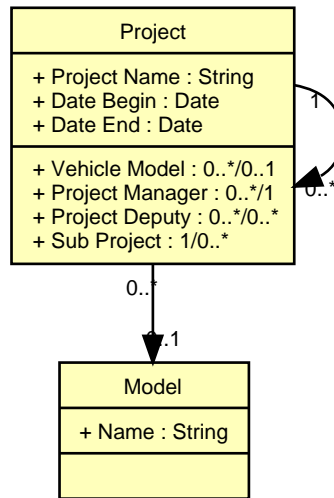


Figure 4.14. Domain model for category Project Structure.

4.8.1. Project [D-80000]

Priority: High
 Release Version: 1.3

Table 4.13. Entity Summary

| <i>Project</i> | | | | |
|------------------------|--|-------------|-------------|---------|
| Constraints | | | | |
| Attribute | Reference To | Relation | Constraints | Pattern |
| <i>Project Name</i> | | | | String |
| <i>Vehicle Model</i> | [0..*/0..1] Section 4.9.1, "Model [D-90018]" | 0..* : 0..1 | | |
| <i>Date Begin</i> | | | | Date |
| <i>Date End</i> | | | | Date |
| <i>Project Manager</i> | [0..*/1] ??? | 0..* : 1 | | |
| <i>Project Deputy</i> | [0..*/0..*] ??? | 0..* : 0..* | | |
| <i>Sub Project</i> | [1/0..*] Section 4.8.1, "Project [D-80000]" | 1 : 0..* | | |

Table 4.14. Referring Entities

| Entity | Relation | Constraints | Pattern |
|--|----------|-------------|---------|
| [Section 4.8.1, "Project [D-80000]"] | 1:0..* | | |

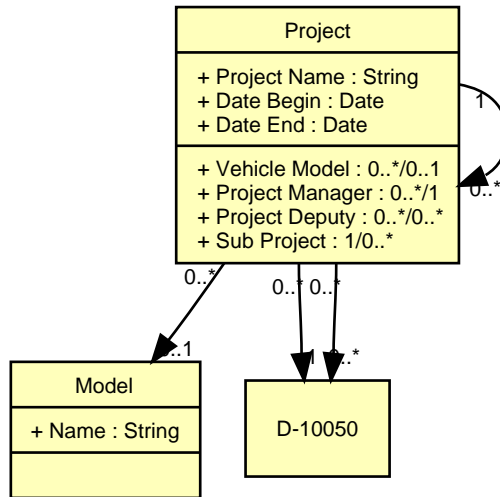


Figure 4.15. Domain model diagram for entity D-80000 Project

4.9. Vehicle

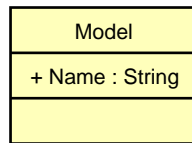


Figure 4.16. Domain model for category Vehicle.

4.9.1. Model [D-90018]

Priority: High

Release Version: 1.3

Model based on vehicle 1.x.

Table 4.15. Entity Summary

| <i>Model</i> | | | | |
|--------------|--------------|----------|-------------|---------|
| Constraints | | | | |
| Attribute | Reference To | Relation | Constraints | Pattern |
| Name | | | | String |

Table 4.16. Referring Entities

| Entity | Relation | Constraints | Pattern |
|--------------------------------------|-----------|-------------|---------|
| [Section 4.8.1, "Project [D-80000]"] | 0..*:0..1 | | |

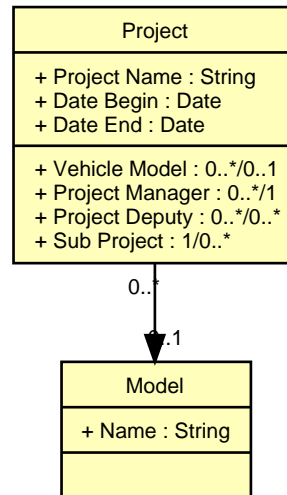


Figure 4.17. Domain model diagram for entity D-90018 Model

Open Issues

- An open issue...**And a bold text...**

Chapter 5. Terms

5.1. Lampukistan [T-99001]

Release Version: 1.4

Lampukistan is a country famous for several uprisings in the Zepettel region. It's major city is Porada Ninfu.

5.2. Porada Ninfu [T-99000]

Release Version: 1.4

Porada Ninfu is the major city of Lampukistan.

Table 5.1. Term summary: Porada Ninfu

| | |
|---------------------|---------------------|
| Porada Ninfu | Acronym: PN |
| Alias | • (de) Porada Ninfu |

Chapter 6. Roles

6.1. Complete Role Dependencies

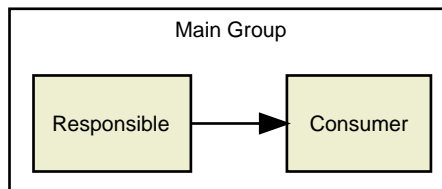


Figure 6.1. Complete Role Dependencies

6.2. Main Group

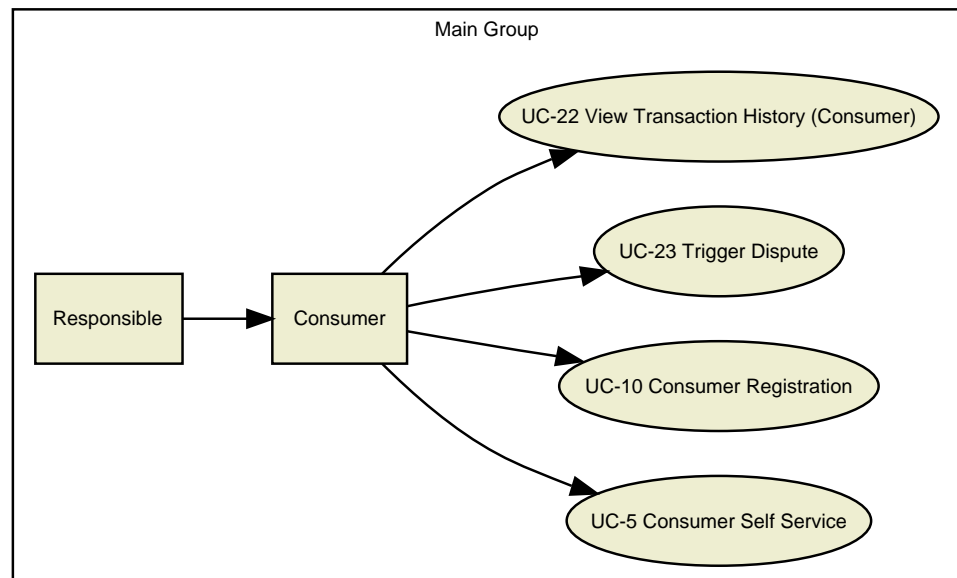


Figure 6.2. Role model for category Main Group.

6.2.1. Consumer [RP-90001]

Priority: High

Release Version:

Table 6.1. Role Summary

| Consumer | |
|----------|---|
| Alias | <ul style="list-style-type: none"> (de) Untergebener (old) Hiwi |
| Superior | [Section 6.2.2, "Responsible [RP-90000]"] |

| | |
|--------------------------------------|--|
| Acting use cases (directly) | [UC-5 Consumer Self Service] [UC-10 Consumer Registration] [UC-23 Trigger Dispute] [UC-22 View Transaction History (Consumer)] |
| Acting use cases (indirectly) | |

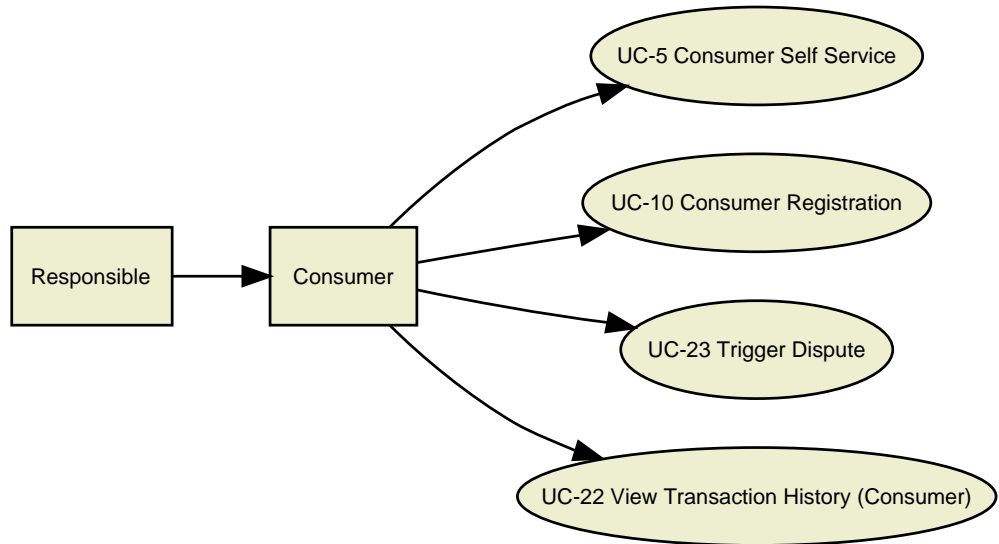


Figure 6.3. Role diagram for role RP-90001 Consumer

6.2.2. Responsible [RP-90000]

Priority: High
 Release Version:

Table 6.2. Role Summary

| Responsible | |
|--------------------------------------|--|
| Alias | • (de) Verantwortlicher |
| Subordinates | [Section 6.2.1, "Consumer [RP-90001]"] |
| Acting use cases (directly) | |
| Acting use cases (indirectly) | [UC-5 Consumer Self Service] [UC-10 Consumer Registration] [UC-23 Trigger Dispute] [UC-22 View Transaction History (Consumer)] |

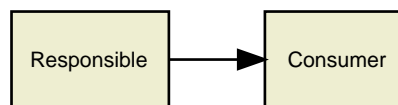


Figure 6.4. Role diagram for role RP-90000 Responsible

Appendix A. All Actors

A.1. Primary Actors

| | |
|--|--|
| [??? | [UC-1 summary] [UC-4 Shop activities] [UC-19 Trigger Payment] |
| [??? | [UC-2 System Administration] |
| [??? | [UC-3 Merchant Self Administration] [UC-25 Merchant Self Administration Login] [UC-14 Modify Master Data] [UC-16 View Transaction History (Merchant)] [UC-27 Modify Aggregation Rules Parameters] [UC-26 Manual Settlement] |
| [Section 6.2.1, "Consumer [RP-90001]"] | [UC-5 Consumer Self Service] [UC-10 Consumer Registration] [UC-23 Trigger Dispute] [UC-22 View Transaction History (Consumer)] |
| [??? | [UC-10 Consumer Registration] |
| [??? | [UC-10 Consumer Registration] |
| | |

A.2. Secondary Actors

| | |
|--|---|
| [??? | [UC-1 summary] |
| [Section 6.2.1, "Consumer [RP-90001]"] | [UC-1 summary] |
| [??? | [UC-1 summary] |
| [??? | [UC-1 summary] |
| [??? | [UC-1 summary] |
| [??? | [UC-2 System Administration] [UC-3 Merchant Self Administration] [UC-4 Shop activities] [UC-5 Consumer Self Service] [UC-19 Trigger Payment] [UC-23 Trigger Dispute] |

| | |
|------|---|
| | [UC-22 View Transaction History (Consumer)] |
| | [UC-25 Merchant Self Administration Login] |
| | [UC-14 Modify Master Data] |
| | [UC-16 View Transaction History (Merchant)] |
| | [UC-27 Modify Aggregation Rules Parameters] |
| | [UC-26 Manual Settlement] |
| [??? | [UC-10 Consumer Registration] |
| [??? | [UC-10 Consumer Registration] |
| | |

Appendix B. Mapping Use Cases to Roles

B.1. Summary Level - Micro Aggregation

| | |
|--------------------------|------|
| [UC-1 summary] : | [??? |
| [UC-4 Shop activities] : | [??? |

B.2. Summary Level - Micro Aggregation System Administration

| | |
|--------------------------------|------|
| [UC-2 System Administration] : | [??? |
|--------------------------------|------|

B.3. Summary Level - Micro Aggregation Merchant Self Administration

| | |
|---------------------------------------|------|
| [UC-3 Merchant Self Administration] : | [??? |
|---------------------------------------|------|

B.4. Summary Level - Micro Aggregation Administration

| | |
|--------------------------------|--|
| [UC-5 Consumer Self Service] : | [Section 6.2.1, "Consumer [RP-90001]" [Section 6.2.2, "Responsible [RP-90000]" |
|--------------------------------|--|

B.5. User Goal Level - m-Wallet

| | |
|---------------------------------|---|
| [UC-10 Consumer Registration] : | [Section 6.2.1, "Consumer [RP-90001]" [Section 6.2.2, "Responsible [RP-90000]" [???] [??? |
|---------------------------------|---|

B.6. User Goal Level - Micro Aggregation Merchant Self Administration

| | |
|---|--|
| [UC-19 Trigger Payment] : | [??? |
| [UC-23 Trigger Dispute] : | [Section 6.2.1, "Consumer [RP-90001]" [Section 6.2.2, "Responsible [RP-90000]" |
| [UC-22 View Transaction History (Consumer)] : | [Section 6.2.1, "Consumer [RP-90001]" [Section 6.2.2, "Responsible [RP-90000]" |
| [UC-25 Merchant Self Administration Login] : | [??? |
| [UC-14 Modify Master Data] : | [??? |
| [UC-16 View Transaction History (Merchant)] : | [??? |

| | |
|---|------|
| [UC-27 Modify Aggregation Rules Parameters] : | [??? |
| [UC-26 Manual Settlement] : | [??? |

Appendix C. Use Case Revision

| | | |
|-------|-----|--|
| UC-1 | 1.1 | |
| UC-2 | 1.2 | |
| UC-3 | 1.1 | |
| UC-4 | 1.1 | |
| UC-5 | 1.1 | |
| UC-10 | 1.5 | <p>1.5 2005/12/08 14:25:18 dcoppola Corrected CVS replacement strings.</p> <p>1.4 2005/12/08 14:21:22 dcoppola Corrected CVS tags.</p> <p>1.3 2005/12/08 13:46:06 dcoppola Collected all requirements for phase 1 and renumbered them.</p> <p>1.2 2005/12/06 08:11:04 dcoppola Final Draft for consumer registration.</p> <p>1.1 2005/11/30 08:25:36 dcoppola initial draft of consumer registration added</p> |
| UC-19 | 1.1 | <p>1.1 2005/09/05 14:02:14 mgriffel xdoc: first use case document</p> <p>1.2 2005/09/01 13:23:50 dcoppola Due to we are only supporting one currency per merchant, the check of that currency will be done against the merchant currency.</p> <p>1.1 2005/08/31 15:30:30 dcoppola initial draft of maggie use cases</p> |
| UC-23 | 1.1 | <p>1.1 2005/09/05 14:02:14 mgriffel xdoc: first use case document</p> <p>1.1 2005/09/01 13:17:33 dcoppola added initial version of additional use cases</p> |
| UC-22 | 1.1 | <p>1.1 2005/09/05 14:02:14 mgriffel xdoc: first use case document</p> <p>1.1 2005/09/01 13:17:33 dcoppola added initial version of additional use cases</p> |
| UC-25 | 1.1 | <p>1.1 2005/09/05 14:02:14 mgriffel xdoc: first use case document</p> <p>1.1 2005/09/01 13:17:33 dcoppola added initial version of additional use cases</p> |
| UC-14 | 1.1 | <p>1.1 2005/09/05 14:02:14 mgriffel xdoc: first use case document</p> |

Use Case Revision

| | | |
|-------|-----|--|
| | | 1.1 2005/09/01 13:17:33 dcoppola added initial version of additional use cases |
| UC-16 | 1.1 | 1.1 2005/09/05 14:02:14 mgriffel xdoc: first use case document 1.1 2005/09/01 13:17:33 dcoppola added initial version of additional use cases |
| UC-27 | 1.1 | 1.1 2005/09/05 14:02:14 mgriffel xdoc: first use case document 1.1 2005/09/01 13:17:33 dcoppola added initial version of additional use cases |
| UC-26 | 1.1 | 1.1 2005/09/05 14:02:14 mgriffel xdoc: first use case document 1.1 2005/09/01 13:17:33 dcoppola added initial version of additional use cases |
| | | |

Appendix D. Open Issues

D.1. Issues for Use Cases

D.1.1. [UC-5 Consumer Self Service] :

1. Should it be possible to have more than one Payment instrument available for the consumer?

D.1.2. [UC-10 Consumer Registration] :

1. After entering a wrong registration code, is it okay to start from entering the MSISDN on or should there be a retry mechanism starting from UC-10-8 or UC-10-10 directly?
2. Should the consumer personal data formular be extracted into another use case?
3. What are the exact checks in [UC-10-14 Consumer Registration] ? Should they be detailed here.
4. To avoid usage of human interaction proof, it is a better way that consumern sends SMS to the wallet, to register his MSISDN?

D.1.3. [UC-19 Trigger Payment] :

1. Is a merchant id necessary or will the identity of the merchant be clarified by certificates or other security features?

D.1.4. [UC-14 Modify Master Data] :

1. What are other master data?

D.1.5. [UC-27 Modify Aggregation Rules Parameters] :

1. What are other aggregation rules?

D.2. Issues for Requirements

- [Section 4.3, "Brand [D-90006]"] :
 - Example open issue
 - Second Example open issue
- [Section 4.9.1, "Model [D-90018]"] :
 - An open issue...**And a bold text...**

Appendix E. Priorities

| | |
|-------|----------------------|
| UC-1 | global view (vision) |
| UC-2 | medium - productive |
| UC-3 | High |
| UC-4 | summary |
| UC-5 | High |
| UC-10 | High |
| UC-19 | High |
| UC-23 | high - prototype |
| UC-22 | high - prototype |
| UC-25 | High |
| UC-14 | high - prototype |
| UC-16 | high - prototype |
| UC-27 | high - prototype |
| UC-26 | high - prototype |
| | |

Glossary

Terms

Lampukistan Lampukistan is a country famous for several uprisings in the Zepettel region. It's major city is Porada Ninfu. See Also [Section 5.1, "Lampukistan \[T-99001\]"](#).

Porada Ninfu Acronym: **PN**
Porada Ninfu is the major city of Lampukistan. See Also [Section 5.2, "Porada Ninfu \[T-99000\]"](#).

Entities

Axle The term 'axle' is new. Currently there exists no auxiliary term 'axle vehicle'. The axle must fulfill following functional requirements: See also: . list of referenced data models: See Also [Section 4.2, "Axle \[D-90005\]"](#).

Blub stunning revolutionary entity
See Also [Section 4.6.2.1, "Blub \[D-90021\]"](#).

Brand Some mind numbing texts
See Also [Section 4.3, "Brand \[D-90006\]"](#).

Extended Feature presentation The extended feature presentation is an extension of the standard feature presentation.
See Also [Section 4.7.1, "Extended Feature presentation \[D-10035\]"](#).

Extent See Also [Section 4.5.1, "Extent \[D-90012\]"](#).

Feature presentation See Also [Section 4.7.2, "Feature presentation \[D-10034\]"](#).

Model Model based on vehicle 1.x.
See Also [Section 4.9.1, "Model \[D-90018\]"](#).

Project See Also [Section 4.8.1, "Project \[D-80000\]"](#).

Vehicle stunning revolutionary entity
See Also [Section 4.6.1, "Vehicle \[D-90007\]"](#).

Roles

Consumer See Also [Section 6.2.1, "Consumer \[RP-90001\]"](#).

Responsible See Also [Section 6.2.2, "Responsible \[RP-90000\]"](#).

Index

A

Actor

Primary

- Consumer, 7, 23, 27, 39
- Consumer 2, 39
- Consumer 3, 39
- Merchant, 9, 14, 17, 30, 32, 36
- Operator, 11
- Shop, 3, 5, 20

Secondary

- Consumer, 3
- m-Wallet, 39
- m-Wallet 2, 39
- Merchant, 3
- Operator, 3
- Payment Issuer, 4
- System, 6, 7, 9, 12, 14, 17, 20, 24, 27, 30, 32, 36
- Time, 4

Axle

alias

- Axis, 43

de

- Achse, 43

B

Brand

de

- Marke, 44
- MeineMarke, 45

C

Channel

- Web, 3, 7, 9, 20, 30, 39, 39, 39, 39
- WEB, 3, 3, 3, 4, 4, 7, 9, 20, 30

Consumer

de

- Untergebener, 56

old

- Hiwi, 56

L

- Lampukistan, 55

P

- Porada Ninfu, 55

de

- Porada Ninfu, 55

R

Responsible

de

- Verantwortlicher, 57